

For Research Use Only

# ADH6 Monoclonal antibody, PBS Only



Catalog Number: 67709-1-PBS

## Basic Information

<b>Catalog Number:</b> 67709-1-PBS	<b>GenBank Accession Number:</b> BC039065	<b>Purification Method:</b> Protein A purification
<b>Size:</b> 1 mg/ml	<b>GeneID (NCBI):</b> 130	<b>CloneNo.:</b> 1F5C6
<b>Source:</b> Mouse	<b>UNIPROT ID:</b> P28332	
<b>Isotype:</b> IgG2b	<b>Full Name:</b> alcohol dehydrogenase 6 (class V)	
<b>Immunogen Catalog Number:</b> AG28845	<b>Calculated MW:</b> 368 aa, 39 kDa	
	<b>Observed MW:</b> 39 kDa	

## Applications

**Tested Applications:**  
WB, Indirect ELISA, IF

**Species Specificity:**  
Human, mouse, rat, rabbit

## Background Information

### Storage

**Storage:**  
Store at -80°C.

**Storage Buffer:**  
PBS Only

For technical support and original validation data for this product please contact:

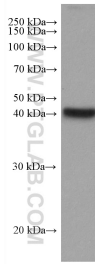
T: 4006900926

E: [Proteintech-CN@ptglab.com](mailto:Proteintech-CN@ptglab.com)

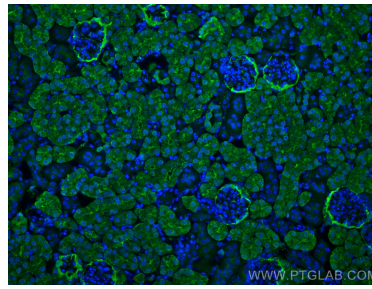
W: [ptgcn.com](http://ptgcn.com)

This product is exclusively available under Proteintech Group brand and is not available to purchase from any other manufacturer.

## Selected Validation Data



mouse liver tissue were subjected to SDS PAGE followed by western blot with 67709-1-Ig (ADH6 antibody) at dilution of 1:100000 incubated at room temperature for 1.5 hours. This data was developed using the same antibody clone with 67709-1-PBS in a different storage buffer formulation.



Immunofluorescent analysis of (4% PFA) fixed mouse kidney tissue using ADH6 antibody (67709-1-Ig, Clone: 1F5C6) at dilution of 1:400 and CoraLite®488-Conjugated AffiniPure Goat Anti-Mouse IgG(H+L). This data was developed using the same antibody clone with 67709-1-PBS in a different storage buffer formulation.