

For Research Use Only

# EIF3A Monoclonal antibody, PBS Only



Catalog Number: 67713-1-PBS

## Basic Information

Catalog Number:

67713-1-PBS

Size:

1mg/ml

Source:

Mouse

Isotype:

IgG3

Immunogen Catalog Number:

AG24762

GenBank Accession Number:

BC114429

GeneID (NCBI):

8661

UNIPROT ID:

Q14152

Full Name:

eukaryotic translation initiation

factor 3, subunit A

Calculated MW:

1382 aa, 166 kDa

Observed MW:

166 kDa

Purification Method:

Protein A purification

CloneNo.:

1C7B4

## Applications

Tested Applications:

WB, IF, IHC, Indirect ELISA

Species Specificity:

Human

## Background Information

### Storage

Storage:

Store at -80°C.

Storage Buffer:

PBS Only

For technical support and original validation data for this product please contact:

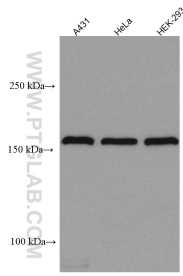
T: 4006900926

E: [Proteintech-CN@ptglab.com](mailto:Proteintech-CN@ptglab.com)

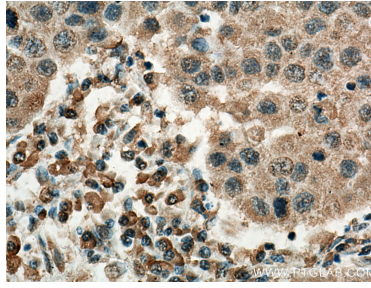
W: [ptgcn.com](http://ptgcn.com)

This product is exclusively available under Proteintech Group brand and is not available to purchase from any other manufacturer.

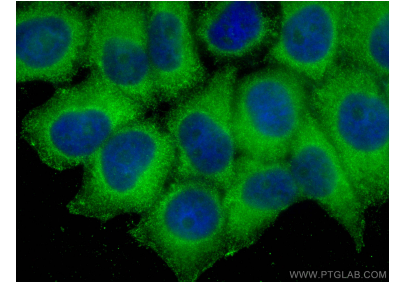
## Selected Validation Data



Various lysates were subjected to SDS PAGE followed by western blot with 67713-1-Ig (EIF3A antibody) at dilution of 1:5000 incubated at room temperature for 1.5 hours. This data was developed using the same antibody clone with 67713-1-PBS in a different storage buffer formulation.



Immunohistochemical analysis of paraffin-embedded human breast cancer tissue slide using 67713-1-Ig (EIF3A antibody) at dilution of 1:500 (under 40x lens). Heat mediated antigen retrieval with Tris-EDTA buffer (pH 9.0). This data was developed using the same antibody clone with 67713-1-PBS in a different storage buffer formulation.



Immunofluorescent analysis of (-20°C Methanol) fixed L02 cells using EIF3A antibody (67713-1-Ig, Clone: 1C7B4) at dilution of 1:400 and CoraLite®488-Conjugated AffiniPure Goat Anti-Mouse IgG(H+L). This data was developed using the same antibody clone with 67713-1-PBS in a different storage buffer formulation.