

For Research Use Only

# CEP290 Monoclonal antibody, PBS Only



Catalog Number: 67716-1-PBS

## Basic Information

<b>Catalog Number:</b> 67716-1-PBS	<b>GenBank Accession Number:</b> BC008641	<b>Purification Method:</b> Protein A purification
<b>Size:</b> 1 mg/ml	<b>GeneID (NCBI):</b> 80184	<b>CloneNo.:</b> 2C10G2
<b>Source:</b> Mouse	<b>UNIPROT ID:</b> O15078	
<b>Isotype:</b> IgG2b	<b>Full Name:</b> centrosomal protein 290kDa	
<b>Immunogen Catalog Number:</b> AG17457	<b>Calculated MW:</b> 2479 aa, 290 kDa	
	<b>Observed MW:</b> 290 kDa	

## Applications

**Tested Applications:**  
WB, Indirect ELISA

**Species Specificity:**  
Human, rat, mouse

## Background Information

Studies in the Chlamydomonas model system has shown that the ciliary protein CEP290 is a critical component of these Y-link junctions. Additionally, numerous studies have demonstrated that CEP290's function is critical for IFT- in CEP290 knockdown experiments, many proteins that would normally localize to the cilium fail to do so, and cilium formation is disrupted or absent. Mutations in CEP290 are accountable for cases of nephronophthisis, Leber congenital amaurosis and Joubert syndrome. In IF analysis of HeLa cells, the white arrows show centrosome and cilium staining. Two isoforms were produced by alternative splicing with predicted MW of 290 and 180 kDa according to UniProt.

## Storage

**Storage:**  
Store at -80°C.

**Storage Buffer:**  
PBS Only

For technical support and original validation data for this product please contact:

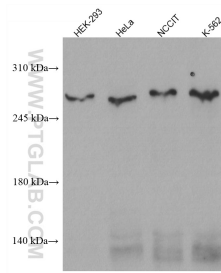
T: 4006900926

E: [Proteintech-CN@ptglab.com](mailto:Proteintech-CN@ptglab.com)

W: [ptgcn.com](http://ptgcn.com)

**This product is exclusively available under Proteintech Group brand and is not available to purchase from any other manufacturer.**

## Selected Validation Data



Various lysates were subjected to SDS PAGE followed by western blot with 67716-1-Ig (CEP290 antibody) at dilution of 1:2000 incubated at room temperature for 1.5 hours. This data was developed using the same antibody clone with 67716-1-PBS in a different storage buffer formulation.