

For Research Use Only

CTPS2 Monoclonal antibody

Catalog Number: 67734-1-Ig



Basic Information

Catalog Number: 67734-1-Ig	GenBank Accession Number: BC034986	Purification Method: Protein A purification
Size: 1000 µg/ml	GeneID (NCBI): 56474	CloneNo.: 1A3B8
Source: Mouse	UNIPROT ID: Q9NRF8	Recommended Dilutions: WB 1:2000-1:10000 IHC 1:250-1:1000 IF-P 1:200-1:800 IF/ICC 1:400-1:1600
Isotype: IgG2a	Full Name: CTP synthase II	
Immunogen Catalog Number: AG30258	Calculated MW: 586 aa, 66 kDa	
	Observed MW: 66 kDa	

Applications

Tested Applications:
WB, IHC, IF/ICC, IF-P, ELISA

Species Specificity:
human, mouse, rat

Note-IHC: suggested antigen retrieval with TE buffer pH 9.0; (*) Alternatively, antigen retrieval may be performed with citrate buffer pH 6.0

Positive Controls:

WB: LNCaP cells, U2OS cells, HeLa cells, HEK-293 cells, HepG2 cells, K-562 cells, PC-12 cells, NIH/3T3 cells, RAW 264.7 cells

IHC: human prostate cancer tissue,

IF-P: human prostate cancer tissue,

IF/ICC: PC-12 cells,

Background Information

CTPS2 (CTP synthase 2) is also named as UTP--ammonia ligase 2 and belongs to the CTP synthase family. It catalyzes the ATP-dependent amination of UTP to CTP with either L-glutamine or ammonia as the source of nitrogen and constitutes the rate-limiting enzyme in the synthesis of cytosine nucleotides.

Storage

Storage:

Store at -20°C. Stable for one year after shipment.

Storage Buffer:

PBS with 0.02% sodium azide and 50% glycerol pH 7.3.

Aliquoting is unnecessary for -20°C storage

For technical support and original validation data for this product please contact:

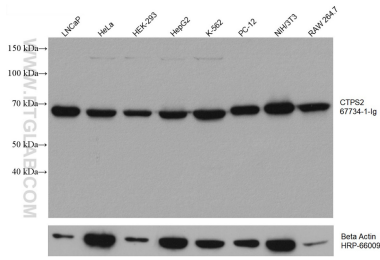
T: 4006900926

E: Proteintech-CN@ptglab.com

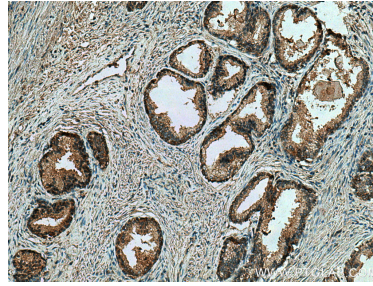
W: ptgcn.com

This product is exclusively available under Proteintech Group brand and is not available to purchase from any other manufacturer.

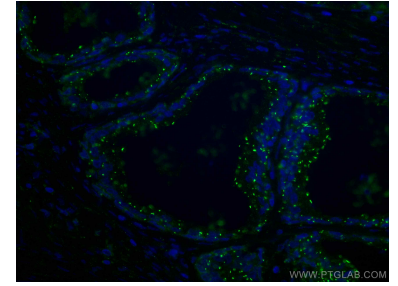
Selected Validation Data



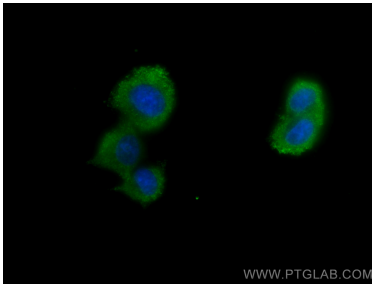
Various lysates were subjected to SDS PAGE followed by western blot with 67734-1-Ig (CTPS2 antibody) at dilution of 1:5000 incubated at room temperature for 1.5 hours. The membrane was stripped and reblotted with HRP-conjugated Beta Actin Monoclonal antibody (HRP-66009) as loading control.



Immunohistochemical analysis of paraffin-embedded human prostate cancer tissue slide using 67734-1-Ig (CTPS2 antibody) at dilution of 1:500 (under 10x lens). Heat mediated antigen retrieval with Tris-EDTA buffer (pH 9.0).



Immunofluorescent analysis of (4% PFA) fixed human prostate cancer tissue using CTPS2 antibody (67734-1-Ig, Clone: 1A3B8) at dilution of 1:400 and CoraLite®488-Conjugated AffiniPure Goat Anti-Mouse IgG(H+L).



Immunofluorescent analysis of (-20°C Methanol) fixed PC-12 cells using CTPS2 antibody (67734-1-Ig, Clone: 1A3B8) at dilution of 1:800 and CoraLite®488-Conjugated AffiniPure Goat Anti-Mouse IgG(H+L).