

For Research Use Only

# SKP1 Monoclonal antibody, PBS Only



Catalog Number: 67745-1-PBS

## Basic Information

<b>Catalog Number:</b> 67745-1-PBS	<b>GenBank Accession Number:</b> BC009839	<b>Purification Method:</b> Protein A purification
<b>Size:</b> 1 mg/ml	<b>GeneID (NCBI):</b> 6500	<b>CloneNo.:</b> 1D5G4
<b>Source:</b> Mouse	<b>UNIPROT ID:</b> P63208	
<b>Isotype:</b> IgG2b	<b>Full Name:</b> S-phase kinase-associated protein 1	
<b>Immunogen Catalog Number:</b> AG30709	<b>Calculated MW:</b> 19 kDa	
	<b>Observed MW:</b> 18-20 kDa	

## Applications

**Tested Applications:**  
WB, Indirect ELISA, IF

**Species Specificity:**  
Human, mouse, rat

## Background Information

SKP1 (S-phase kinase-associated protein 1) is also named as EMC19, OCP2, SKP1A, TCEB1L, belongs to the SKP1 family. It is an essential component of the SCF (SKP1-CUL1-F-box protein) ubiquitin ligase complex, which mediates the ubiquitination of proteins involved in cell cycle progression, signal transduction and transcription.

## Storage

**Storage:**  
Store at -80°C.

**Storage Buffer:**  
PBS Only

For technical support and original validation data for this product please contact:

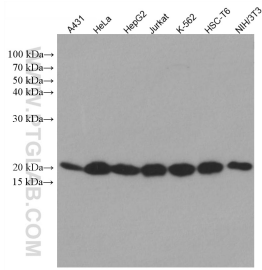
T: 4006900926

E: [Proteintech-CN@ptglab.com](mailto:Proteintech-CN@ptglab.com)

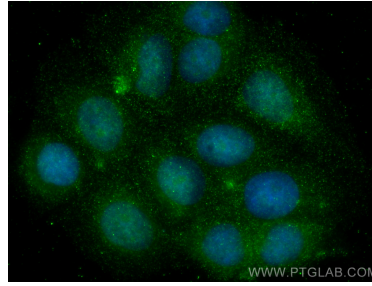
W: [ptgcn.com](http://ptgcn.com)

**This product is exclusively available under Proteintech Group brand and is not available to purchase from any other manufacturer.**

## Selected Validation Data



Various lysates were subjected to SDS PAGE followed by western blot with 67745-1-Ig (SKP1 antibody) at dilution of 1:10000 incubated at room temperature for 1.5 hours. This data was developed using the same antibody clone with 67745-1-PBS in a different storage buffer formulation.



Immunofluorescent analysis of (4% PFA) fixed MCF-7 cells using SKP1 antibody (67745-1-Ig, Clone: 1D5G4) at dilution of 1:800 and CoraLite®488-Conjugated AffiniPure Goat Anti-Mouse IgG(H+L). This data was developed using the same antibody clone with 67745-1-PBS in a different storage buffer formulation.