

For Research Use Only

SAR1B Monoclonal antibody

Catalog Number: 67765-1-Ig



Basic Information

Catalog Number:

67765-1-Ig

Size:

1000 µg/ml

Source:

Mouse

Isotype:

IgG1

Immunogen Catalog Number:

AG7718

GenBank Accession Number:

BC002847

GeneID (NCBI):

51128

UNIPROT ID:

Q9Y6B6

Full Name:

SAR1 homolog B (S. cerevisiae)

Calculated MW:

22 kDa

Observed MW:

22-25 kDa

Purification Method:

Protein G purification

CloneNo.:

1B11A1

Recommended Dilutions:

WB 1:5000-1:10000

Applications

Tested Applications:

WB, ELISA

Species Specificity:

Human, mouse, rat, pig, rabbit

Positive Controls:

WB : pig liver tissue, HeLa cells, HepG2 cells, L02 cells, mouse liver tissue, rat liver tissue, rabbit liver tissue

Background Information

SAR1B, also named as SARA2, SARB and GTBPB, belongs to the small GTPase superfamily and SAR1 family. It is involved in transport from the endoplasmic reticulum to the Golgi apparatus. SAR1B is activated by the guanine nucleotide exchange factor PREB. It is involved in the selection of the protein cargo and the assembly of the COPII coat complex.

Storage

Storage:

Store at -20°C.

Storage Buffer:

PBS with 0.02% sodium azide and 50% glycerol pH 7.3.

Aliquoting is unnecessary for -20°C storage

For technical support and original validation data for this product please contact:

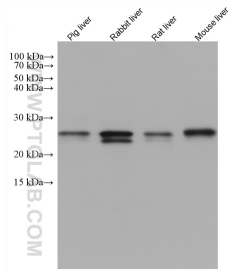
T: 4006900926

E: Proteintech-CN@ptglab.com

W: ptgcn.com

This product is exclusively available under Proteintech Group brand and is not available to purchase from any other manufacturer.

Selected Validation Data



Various lysates were subjected to SDS PAGE followed by western blot with 67765-1-Ig (SAR1B antibody) at dilution of 1:10000 incubated at room temperature for 1.5 hours.