

For Research Use Only

# SAR1B Monoclonal antibody, PBS Only



Catalog Number: 67765-1-PBS

## Basic Information

<b>Catalog Number:</b> 67765-1-PBS	<b>GenBank Accession Number:</b> BC002847	<b>Purification Method:</b> Protein G purification
<b>Size:</b> 1 mg/ml	<b>GeneID (NCBI):</b> 51128	<b>CloneNo.:</b> 1B11A1
<b>Source:</b> Mouse	<b>UNIPROT ID:</b> Q9Y6B6	
<b>Isotype:</b> IgG1	<b>Full Name:</b> SAR1 homolog B (S. cerevisiae)	
<b>Immunogen Catalog Number:</b> AG7718	<b>Calculated MW:</b> 22 kDa	
	<b>Observed MW:</b> 22-25 kDa	

## Applications

**Tested Applications:**  
WB, Indirect ELISA

**Species Specificity:**  
Human, mouse, rat, pig, rabbit

## Background Information

SAR1B, also named as SARA2, SARB and GTBPB, belongs to the small GTPase superfamily and SAR1 family. It is involved in transport from the endoplasmic reticulum to the Golgi apparatus. SAR1B is activated by the guanine nucleotide exchange factor PREB. It is involved in the selection of the protein cargo and the assembly of the COPII coat complex.

## Storage

**Storage:**  
Store at -80°C.  
**The product is shipped with ice packs. Upon receipt, store it immediately at -80°C**

**Storage Buffer:**  
PBS Only

For technical support and original validation data for this product please contact:

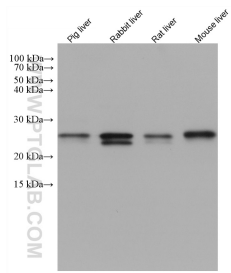
T: 4006900926

E: [Proteintech-CN@ptglab.com](mailto:Proteintech-CN@ptglab.com)

W: [ptgcn.com](http://ptgcn.com)

**This product is exclusively available under Proteintech Group brand and is not available to purchase from any other manufacturer.**

## Selected Validation Data



Various lysates were subjected to SDS PAGE followed by western blot with 67765-1-Ig (SAR1B antibody) at dilution of 1:10000 incubated at room temperature for 1.5 hours. This data was developed using the same antibody clone with 67765-1-PBS in a different storage buffer formulation.