

For Research Use Only

GALE Monoclonal antibody, PBS Only



Catalog Number: 67772-1-PBS

Basic Information

| | | |
|--|--|---|
| Catalog Number: 67772-1-PBS | GenBank Accession Number: BC050685 | Purification Method: Protein A purification |
| Size: 1 mg/ml | GeneID (NCBI): 2582 | CloneNo.: 3F2C2 |
| Source: Mouse | UNIPROT ID: Q14376 | |
| Isotype: IgG2b | Full Name: UDP-galactose-4-epimerase | |
| Immunogen Catalog Number: AG6571 | Calculated MW: 38 kDa | |
| | Observed MW: 38 kDa | |

Applications

Tested Applications:
WB, Indirect ELISA

Species Specificity:
Human, Mouse, Rat, Pig, Rabbit

Background Information

GALE (Galactowaldenase) is also named as UDP-glucose 4-epimerase, UDP-galactose 4-epimerase, and belongs to the sugar epimerase family. UDP-galactose 4-epimerase catalyzes the interconversion of UDP-glucose and UDP-galactose during normal galactose metabolism. In humans, deficiencies in this enzyme lead to the complex disorder referred to as epimerase-deficiency galactosemia (PMID:10801319). It can exist as a homodimer (PMID:8931134).

Storage

Storage:
Store at -80°C.
The product is shipped with ice packs. Upon receipt, store it immediately at -80°C

Storage Buffer:
PBS Only

For technical support and original validation data for this product please contact:

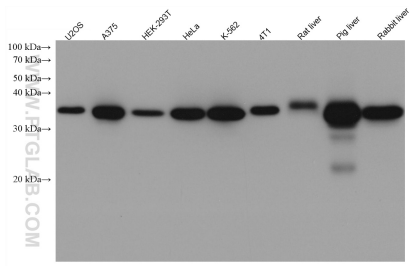
T: 4006900926

E: Proteintech-CN@ptglab.com

W: ptgcn.com

This product is exclusively available under Proteintech Group brand and is not available to purchase from any other manufacturer.

Selected Validation Data



Various lysates were subjected to SDS PAGE followed by western blot with 67772-1-Ig (GALE antibody) at dilution of 1:20000 incubated at room temperature for 1.5 hours. This data was developed using the same antibody clone with 67772-1-PBS in a different storage buffer formulation.