

For Research Use Only

TWF1 Monoclonal antibody

Catalog Number: 67796-1-Ig



Basic Information

Catalog Number:

67796-1-Ig

Size:

1000 µg/ml

Source:

Mouse

Isotype:

IgG2a

Immunogen Catalog Number:

AG28630

GenBank Accession Number:

BC022344

GeneID (NCBI):

5756

UNIPROT ID:

Q12792

Full Name:

twinfilin, actin-binding protein,
homolog 1 (Drosophila)

Calculated MW:

368 aa, 42 kDa

Observed MW:

36-38 kDa

Purification Method:

Protein A purification

CloneNo.:

2F10F11

Recommended Dilutions:

WB 1:2000-1:20000

IF/ICC 1:200-1:800

Applications

Tested Applications:

IF/ICC, WB, ELISA

Species Specificity:

Human

Positive Controls:

WB : LNCaP cells, Jurkat cells, HEK-293 cells, HeLa cells, HepG2 cells

IF/ICC : MCF-7 cells,

Background Information

Twinfilin-1 (TWF1) is an actin-binding protein implicated in cell motility, invasion and migration. Its expression is linked to sensitivity to drugs and cancer progression. Overexpression of TWF1 has been reported in various cancers, including breast cancer and lung cancer.

Storage

Storage:

Store at -20°C. Stable for one year after shipment.

Storage Buffer:

PBS with 0.02% sodium azide and 50% glycerol pH 7.3.

Aliquoting is unnecessary for -20°C storage

For technical support and original validation data for this product please contact:

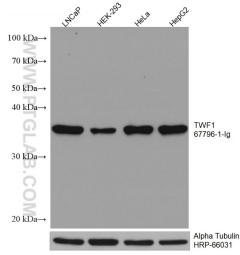
T: 4006900926

E: Proteintech-CN@ptglab.com

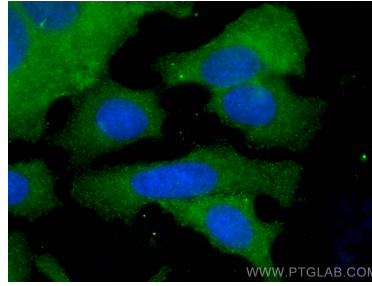
W: ptgcn.com

This product is exclusively available under Proteintech Group brand and is not available to purchase from any other manufacturer.

Selected Validation Data



Various lysates were subjected to SDS PAGE followed by western blot with 67796-1-Ig (TWF1 antibody) at dilution of 1:10000 incubated at room temperature for 1.5 hours. The membrane was stripped and reblotted with HRP-conjugated Alpha Tubulin Monoclonal antibody (HRP-66031) as loading control.



Immunofluorescent analysis of (-20°C Methanol) fixed MCF-7 cells using TWF1 antibody (67796-1-Ig, Clone: 2F10F11) at dilution of 1:400 and CoraLite®488-Conjugated AffiniPure Goat Anti-Mouse IgG(H+L).