

For Research Use Only

MFG-E8 Monoclonal antibody, PBS Only



Catalog Number: 67797-1-PBS

Basic Information

| | | |
|---|--|---|
| Catalog Number: 67797-1-PBS | GenBank Accession Number: BC003610 | Purification Method: Protein A purification |
| Size: 1 mg/ml | GeneID (NCBI): 4240 | CloneNo.: 1A1A9 |
| Source: Mouse | UNIPROT ID: Q08431 | |
| Isotype: IgG2b | Full Name: milk fat globule-EGF factor 8 protein | |
| Immunogen Catalog Number: AG30666 | Calculated MW: 43 kDa | |
| | Observed MW: 43 kDa | |

Applications

Tested Applications:
WB, IHC, Indirect ELISA

Species Specificity:
Human

Background Information

Milk fat globule-epidermal growth factor-factor 8 (MFG-E8), also known as lactadherin, is a multifunctional secreted glycoprotein exhibiting versatile functions in cell physiology affecting health and diseases. It plays roles in clearance of apoptotic cells, anti-inflammatory, wound healing, arterial remodeling, angiogenesis, enhancing tumorigenicity and cancer metastasis (PMID: 23972256). MFG-E8 consists of two-repeated EGF-like domains, a mucin-like domain and two-repeated discoïdin-like domains (C-domains), and contains an integrin-binding motif (RGD sequence) in the EGF-like domain (PMID: 11856354). It shows ubiquitous pattern of expression in various types of cells and tissues. Altered expression of MFG-E8 causes disruptions of homeostasis and is correlated with a number of diseases (PMID: 27429513).

Storage

Storage:
Store at -80°C.
The product is shipped with ice packs. Upon receipt, store it immediately at -80°C

Storage Buffer:
PBS Only

For technical support and original validation data for this product please contact:

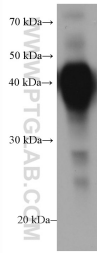
T: 4006900926

E: Proteintech-CN@ptglab.com

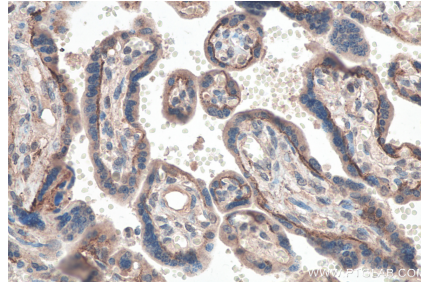
W: ptgcn.com

This product is exclusively available under Proteintech Group brand and is not available to purchase from any other manufacturer.

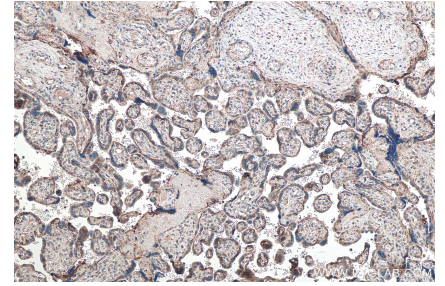
Selected Validation Data



human milk were subjected to SDS PAGE followed by western blot with 67797-1-Ig (MFG-E8 antibody) at dilution of 1:20000 incubated at room temperature for 1.5 hours. This data was developed using the same antibody clone with 67797-1-PBS in a different storage buffer formulation.



Immunohistochemical analysis of paraffin-embedded human placenta tissue slide using 67797-1-Ig (MFG-E8 antibody) at dilution of 1:8000 (under 40x lens). Heat mediated antigen retrieval with Tris-EDTA buffer (pH 9.0). This data was developed using the same antibody clone with 67797-1-PBS in a different storage buffer formulation.



Immunohistochemical analysis of paraffin-embedded human placenta tissue slide using 67797-1-Ig (MFG-E8 antibody) at dilution of 1:8000 (under 10x lens). Heat mediated antigen retrieval with Tris-EDTA buffer (pH 9.0). This data was developed using the same antibody clone with 67797-1-PBS in a different storage buffer formulation.