

For Research Use Only

# HK3 Monoclonal antibody

Catalog Number: 67803-1-Ig **1 Publications**



## Basic Information

Catalog Number:

67803-1-Ig

Size:

1000 µg/ml

Source:

Mouse

Isotype:

IgG1

Immunogen Catalog Number:

AG30798

GenBank Accession Number:

BC028129

GeneID (NCBI):

3101

UNIPROT ID:

P52790

Full Name:

hexokinase 3 (white cell)

Calculated MW:

923 aa, 99 kDa

Observed MW:

99 kDa

Purification Method:

Protein A purification

CloneNo.:

3H3C7

Recommended Dilutions:

WB 1:5000-1:50000

IHC 1:500-1:2000

IF 1:500-1:2000

## Applications

Tested Applications:

WB, IF, ICC, IHC, ELISA

Cited Applications:

WB

Species Specificity:

Human, Mouse, Rat, Pig

Cited Species:

human, mouse

**Note-IHC: suggested antigen retrieval with TE buffer pH 9.0; (\*) Alternatively, antigen retrieval may be performed with citrate buffer pH 6.0**

Positive Controls:

WB: Raji cells, Ramos cells, RAW 264.7 cells, human saliva, rat spleen tissue

IHC: human lung cancer tissue,

IF: HeLa cells,

## Background Information

### Notable Publications

Author	Pubmed ID	Journal	Application
Mingyu Zhu	38484574	Biochem Biophys Res Commun	WB

## Storage

Storage:

Store at -20°C. Stable for one year after shipment.

Storage Buffer:

PBS with 0.02% sodium azide and 50% glycerol pH 7.3.

Aliquoting is unnecessary for -20°C storage

For technical support and original validation data for this product please contact:

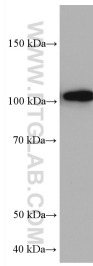
T: 4006900926

E: Proteintech-CN@ptglab.com

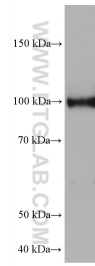
W: ptgcn.com

**This product is exclusively available under Proteintech Group brand and is not available to purchase from any other manufacturer.**

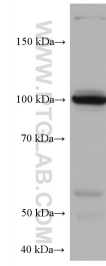
## Selected Validation Data



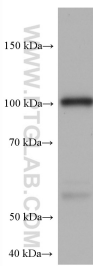
human saliva were subjected to SDS PAGE followed by western blot with 67803-1-Ig (HK3 antibody) at dilution of 1:10000 incubated at room temperature for 1.5 hours.



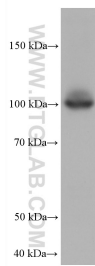
rat spleen tissue were subjected to SDS PAGE followed by western blot with 67803-1-Ig (HK3 antibody) at dilution of 1:10000 incubated at room temperature for 1.5 hours.



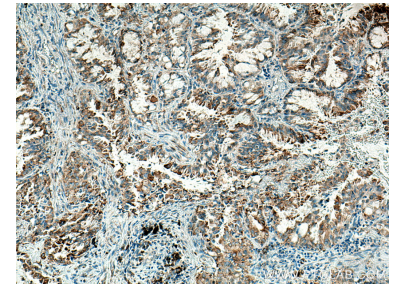
Raji cells were subjected to SDS PAGE followed by western blot with 67803-1-Ig (HK3 antibody) at dilution of 1:10000 incubated at room temperature for 1.5 hours.



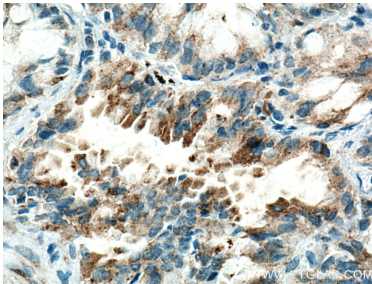
Ramos cells were subjected to SDS PAGE followed by western blot with 67803-1-Ig (HK3 antibody) at dilution of 1:10000 incubated at room temperature for 1.5 hours.



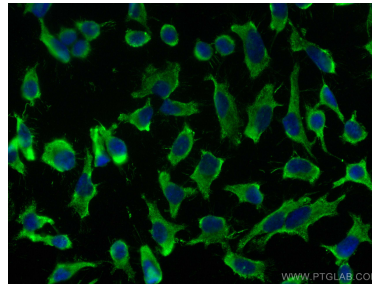
RAW 264.7 cells were subjected to SDS PAGE followed by western blot with 67803-1-Ig (HK3 antibody) at dilution of 1:10000 incubated at room temperature for 1.5 hours.



Immunohistochemical analysis of paraffin-embedded human lung cancer tissue slide using 67803-1-Ig (HK3 antibody) at dilution of 1:1000 (under 10x lens). Heat mediated antigen retrieval with Tris-EDTA buffer (pH 9.0).



Immunohistochemical analysis of paraffin-embedded human lung cancer tissue slide using 67803-1-Ig (HK3 antibody) at dilution of 1:1000 (under 40x lens). Heat mediated antigen retrieval with Tris-EDTA buffer (pH 9.0).



Immunofluorescent analysis of (-20°C Methanol) fixed HeLa cells using HK3 antibody (67803-1-Ig, Clone: 3H3C7) at dilution of 1:1000 and CoraLite®488-Conjugated AffiniPure Goat Anti-Mouse IgG(H+L).