

For Research Use Only

WWP1 Monoclonal antibody, PBS Only



Catalog Number: 67804-1-PBS

Basic Information

Catalog Number:

67804-1-PBS

Size:

1 mg/ml

Source:

Mouse

Isotype:

IgG2b

Immunogen Catalog Number:

AG30171

GenBank Accession Number:

BC036065

GeneID (NCBI):

11059

UNIPROT ID:

Q9H0M0

Full Name:

WW domain containing E3 ubiquitin protein ligase 1

Calculated MW:

922 aa, 105 kDa

Observed MW:

95-105 kDa

Purification Method:

Protein A purification

CloneNo.:

2G8G11

Applications

Tested Applications:

WB, Indirect ELISA

Species Specificity:

Human

Background Information

WW domain-containing E3 ubiquitin protein ligase 1 (WWP1) is a multifunction protein containing an N-terminal C2 domain, four tandem WW domains for substrate binding, and a C-terminal catalytic HECT domain for ubiquitin transferring. It is also named as AIP5, Tiul1. WWP1 regulates a variety of cellular biological processes including protein trafficking and degradation, signaling, transcription, and viral budding. WWP1 has been implicated in several diseases, such as cancers, infectious diseases, neurological diseases, and aging (PMID:22051607). It has 6 isoforms produced by alternative splicing.

Storage

Storage:

Store at -80°C.

Storage Buffer:

PBS Only

For technical support and original validation data for this product please contact:

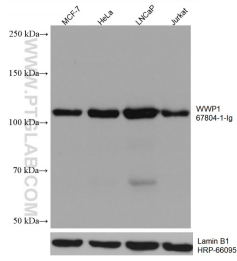
T: 4006900926

E: Proteintech-CN@ptglab.com

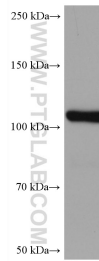
W: ptgcn.com

This product is exclusively available under Proteintech Group brand and is not available to purchase from any other manufacturer.

Selected Validation Data



Various lysates were subjected to SDS PAGE followed by western blot with 67804-1-Ig (WWP1 antibody) at dilution of 1:10000 incubated at room temperature for 1.5 hours. The membrane was stripped and reblotted with HRP-conjugated Lamin B1 Monoclonal antibody (HRP-66095) as loading control. This data was developed using the same antibody clone with 67804-1-PBS in a different storage buffer formulation.



HaCaT cells were subjected to SDS PAGE followed by western blot with 67804-1-Ig (WWP1 antibody) at dilution of 1:10000 incubated at room temperature for 1.5 hours. This data was developed using the same antibody clone with 67804-1-PBS in a different storage buffer formulation.