

For Research Use Only

PPP2CA Monoclonal antibody, PBS Only



Catalog Number: 67809-1-PBS

Basic Information

Catalog Number:

67809-1-PBS

Size:

1 mg/ml

Source:

Mouse

Isotype:

IgG1

Immunogen Catalog Number:

AG4294

GenBank Accession Number:

BC031696

GeneID (NCBI):

5515

UNIPROT ID:

P67775

Full Name:

protein phosphatase 2 (formerly 2A), catalytic subunit, alpha isoform

Calculated MW:

309 aa, 36 kDa

Observed MW:

33 kDa

Purification Method:

Protein G purification

CloneNo.:

3A6H5

Applications

Tested Applications:

WB, Indirect ELISA, IHC

Species Specificity:

Human, rat

Background Information

PPP2CA, also named as RP-C and PP2A-alpha, belongs to the PPP phosphatase family and PP-1 subfamily. PP2A can modulate the activity of phosphorylase B kinase casein kinase 2, mitogen-stimulated S6 kinase, and MAP-2 kinase. PP2A activity was modestly decreased in AML patients harboring C-KIT/WT. PP2A is a target for C-KIT/TKD and implicated the potential efficacy of therapies targeting PP2A in such AML in future.

Storage

Storage:

Store at -80°C.

Storage Buffer:

PBS Only

For technical support and original validation data for this product please contact:

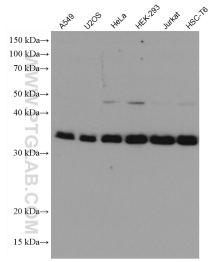
T: 4006900926

E: Proteintech-CN@ptglab.com

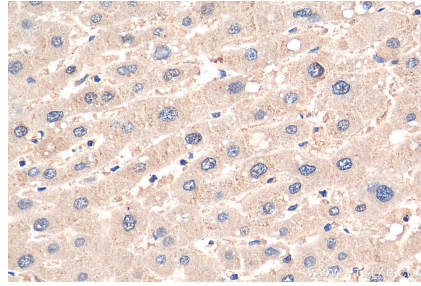
W: ptgcn.com

This product is exclusively available under Proteintech Group brand and is not available to purchase from any other manufacturer.

Selected Validation Data



Various lysates were subjected to SDS PAGE followed by western blot with 67809-1-Ig (PPP2CA antibody) at dilution of 1:2000 incubated at room temperature for 1.5 hours. This data was developed using the same antibody clone with 67809-1-PBS in a different storage buffer formulation.



Immunohistochemical analysis of paraffin-embedded human liver tissue slide using 67809-1-Ig (PPP2CA antibody) at dilution of 1:200 (under 40x lens). Heat mediated antigen retrieval with Tris-EDTA buffer (pH 9.0). This data was developed using the same antibody clone with 67809-1-PBS in a different storage buffer formulation.