

For Research Use Only

TOE1 Monoclonal antibody, PBS Only



Catalog Number: 67829-1-PBS

Basic Information

| | | |
|---|---|---|
| Catalog Number: 67829-1-PBS | GenBank Accession Number: BC009364 | Purification Method: Protein A purification |
| Size: 1 mg/ml | GeneID (NCBI): 114034 | CloneNo.: 2C10H7 |
| Source: Mouse | UNIPROT ID: Q96GM8 | |
| Isotype: IgG2a | Full Name: target of EGR1, member 1 (nuclear) | |
| Immunogen Catalog Number: AG28982 | Calculated MW: 510 aa, 57 kDa | |
| | Observed MW: 57 kDa | |

Applications

Tested Applications:
WB, Indirect ELISA, IHC, IF

Species Specificity:
Human

Background Information

TOE1, also known as hCaf1z, belongs to the DEDD family of deadenylases. TOE1 was initially identified as a direct target gene of ERG1, an immediate early transcription factor. TOE1 encodes an Asp-Glu-Asp-Asp deadenylase that specifically localizes to Cajal bodies in the nucleus, where assembly and maturation of small nuclear ribonucleoprotein particles, and telomerase ribonucleoprotein complex take place (PMID: 36257135). TOE1 has 2 isoforms with the molecular mass of 48 and 57 kDa.

Storage

Storage:
Store at -80°C.
The product is shipped with ice packs. Upon receipt, store it immediately at -80°C

Storage Buffer:
PBS Only

For technical support and original validation data for this product please contact:

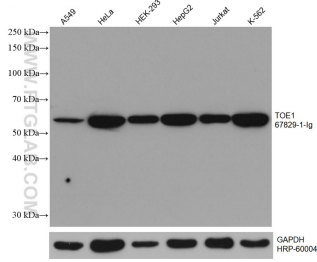
T: 4006900926

E: Proteintech-CN@ptglab.com

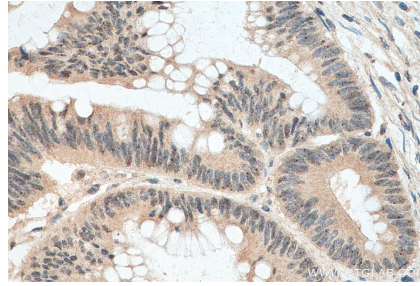
W: ptgcn.com

This product is exclusively available under Proteintech Group brand and is not available to purchase from any other manufacturer.

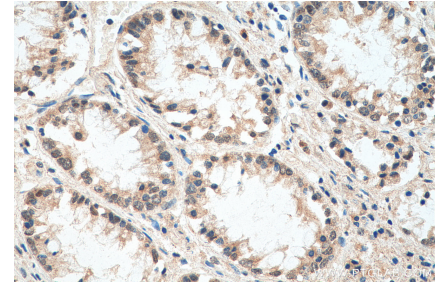
Selected Validation Data



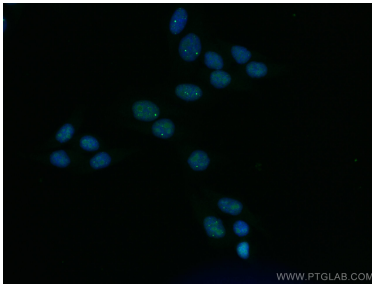
Various lysates were subjected to SDS PAGE followed by western blot with 67829-1-Ig (TOE1 antibody) at dilution of 1:5000 incubated at room temperature for 1.5 hours. The membrane was stripped and reblotted with HRP-conjugated GAPDH Monoclonal antibody (HRP-60004) as loading control. This data was developed using the same antibody clone with 67829-1-PBS in a different storage buffer formulation.



Immunohistochemical analysis of paraffin-embedded human colon cancer tissue slide using 67829-1-Ig (TOE1 antibody) at dilution of 1:500 (under 40x lens). Heat mediated antigen retrieval with Tris-EDTA buffer (pH 9.0). This data was developed using the same antibody clone with 67829-1-PBS in a different storage buffer formulation.



Immunohistochemical analysis of paraffin-embedded human colon cancer tissue slide using 67829-1-Ig (TOE1 antibody) at dilution of 1:500 (under 40x lens). Heat mediated antigen retrieval with Tris-EDTA buffer (pH 9.0). This data was developed using the same antibody clone with 67829-1-PBS in a different storage buffer formulation.



Immunofluorescent analysis of (4% PFA) fixed HepG2 cells using TOE1 antibody (67829-1-Ig, Clone: 2C10H7) at dilution of 1:800 and CoraLite®488-Conjugated AffiniPure Goat Anti-Mouse IgG(H+L). This data was developed using the same antibody clone with 67829-1-PBS in a different storage buffer formulation.