

For Research Use Only

PDE6A Monoclonal antibody, PBS Only



Catalog Number: 67832-1-PBS

Basic Information

Catalog Number: 67832-1-PBS	GenBank Accession Number: BC035909	Purification Method: Protein A purification
Size: 1 mg/ml	GeneID (NCBI): 5145	CloneNo.: 1B3B4
Source: Mouse	UNIPROT ID: P16499	
Isotype: IgG1	Full Name: phosphodiesterase 6A, cGMP-specific, rod, alpha	
Immunogen Catalog Number: AG16741	Calculated MW: 860 aa, 100 kDa	
	Observed MW: 100 kDa	

Applications

Tested Applications:
WB, ELISA

Species Specificity:
Human, Mouse, Rat

Background Information

PDE6A (Rod cGMP-specific 3',5'-cyclic phosphodiesterase subunit alpha) is also named as GMP-PDE alpha, PDE V-B1, PDEA and belongs to the cyclic nucleotide phosphodiesterase family. PDE6A contains an open reading frame capable of coding for a polypeptide of 859 amino acids and about 100 kDa. It is a subunit of a key phototransduction enzyme which participates in processes of transmission and amplification of the visual signal. The expression of PDE6 alpha in retina is essential for normal expression of PDE6 beta and PDE6 gamma.

Storage

Storage:
Store at -80°C.

Storage Buffer:
PBS only

For technical support and original validation data for this product please contact:

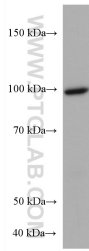
T: 4006900926

E: Proteintech-CN@ptglab.com

W: ptgcn.com

This product is exclusively available under Proteintech Group brand and is not available to purchase from any other manufacturer.

Selected Validation Data



mouse eye tissue were subjected to SDS PAGE followed by western blot with 67832-1-Ig (PDE6A antibody) at dilution of 1:2000 incubated at room temperature for 1.5 hours. This data was developed using the same antibody clone with 67832-1-PBS in a different storage buffer formulation.