

For Research Use Only

# RAB1B Monoclonal antibody, PBS Only



Catalog Number: 67837-1-PBS

## Basic Information

Catalog Number:

67837-1-PBS

Size:

1 mg/ml

Source:

Mouse

Isotype:

IgG1

Immunogen Catalog Number:

AG12069

GenBank Accession Number:

BC071169

GeneID (NCBI):

81876

UNIPROT ID:

Q9H0U4

Full Name:

RAB1B, member RAS oncogene family

Calculated MW:

201 aa, 22 kDa

Observed MW:

22 kDa

Purification Method:

Protein G purification

CloneNo.:

3C2G6

## Applications

Tested Applications:

WB, IF, ELISA

Species Specificity:

Human, mouse, rat

## Background Information

### Storage

Storage:

Store at -80°C.

Storage Buffer:

PBS only

For technical support and original validation data for this product please contact:

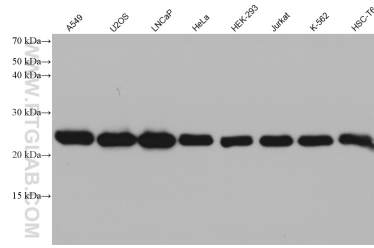
T: 4006900926

E: [Proteintech-CN@ptglab.com](mailto:Proteintech-CN@ptglab.com)

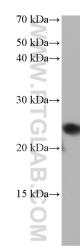
W: [ptgcn.com](http://ptgcn.com)

This product is exclusively available under Proteintech Group brand and is not available to purchase from any other manufacturer.

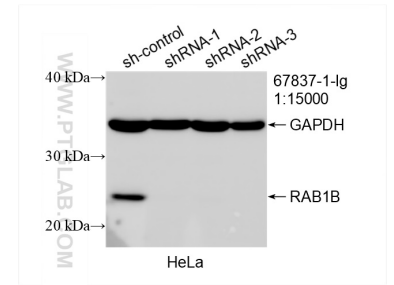
## Selected Validation Data



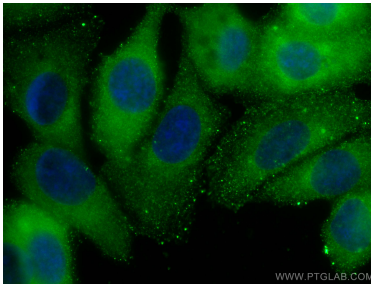
Various lysates were subjected to SDS PAGE followed by western blot with 67837-1-Ig (RAB1B antibody) at dilution of 1:10000 incubated at room temperature for 1.5 hours. This data was developed using the same antibody clone with 67837-1-PBS in a different storage buffer formulation.



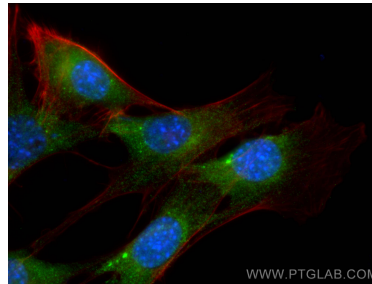
NIH/3T3 cells were subjected to SDS PAGE followed by western blot with 67837-1-Ig (RAB1B antibody) at dilution of 1:10000 incubated at room temperature for 1.5 hours. This data was developed using the same antibody clone with 67837-1-PBS in a different storage buffer formulation.



WB result of RAB1B antibody (67837-1-Ig; 1:15000; incubated at room temperature for 1.5 hours) with sh-Control and sh-RAB1B transfected HeLa cells. This data was developed using the same antibody clone with 67837-1-PBS in a different storage buffer formulation.



Immunofluorescent analysis of (-20°C Methanol) fixed MCF-7 cells using RAB1B antibody (67837-1-Ig, Clone: 3C2G6) at dilution of 1:400 and CoraLite@488-Conjugated AffiniPure Goat Anti-Mouse IgG(H+L). This data was developed using the same antibody clone with 67837-1-PBS in a different storage buffer formulation.



Immunofluorescent analysis of (4% PFA) fixed NIH/3T3 cells using RAB1B antibody (67837-1-Ig, Clone: 3C2G6) at dilution of 1:800 and CoraLite@488-Conjugated AffiniPure Goat Anti-Mouse IgG(H+L), CL594-Phalloidin (red). This data was developed using the same antibody clone with 67837-1-PBS in a different storage buffer formulation.