

For Research Use Only

# CIP2A Monoclonal antibody, PBS Only



Catalog Number: 67843-1-PBS

## Basic Information

<b>Catalog Number:</b> 67843-1-PBS	<b>GenBank Accession Number:</b> BC130564	<b>Purification Method:</b> Protein G purification
<b>Size:</b> 1 mg/ml	<b>GeneID (NCBI):</b> 57650	<b>CloneNo.:</b> 2A3F3
<b>Source:</b> Mouse	<b>UNIPROT ID:</b> Q8TCG1	
<b>Isotype:</b> IgG1	<b>Full Name:</b> KIAA1524	
<b>Immunogen Catalog Number:</b> AG19598	<b>Calculated MW:</b> 905 aa, 102 kDa	
	<b>Observed MW:</b> 102 kDa	

## Applications

**Tested Applications:**  
WB, Indirect ELISA, IF

**Species Specificity:**  
Human, rat

## Background Information

Cancerous inhibitor of protein phosphatase 2A (CIP2A) was originally identified as a cellular protein phosphatase 2A (PP2A) inhibitor, and has been shown to control oncogenic cellular signals by suppressing the tumor suppressor PP2A. CIP2A overexpression has been found in several human malignancies including breast cancer, hepatocellular carcinoma, gastric cancer, head and neck cancer, colon cancer, prostate cancer and non-small cell lung cancer. CIP2A is a 83-102 kDa cytoplasmic protein. ( PMID: 26824320, PMID: 25458953, PMID: 29720672)

## Storage

**Storage:**  
Store at -80°C.  
**The product is shipped with ice packs. Upon receipt, store it immediately at -80°C**

**Storage Buffer:**  
PBS Only

For technical support and original validation data for this product please contact:

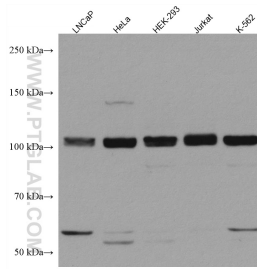
T: 4006900926

E: [Proteintech-CN@ptglab.com](mailto:Proteintech-CN@ptglab.com)

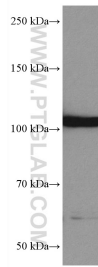
W: [ptgcn.com](http://ptgcn.com)

**This product is exclusively available under Proteintech Group brand and is not available to purchase from any other manufacturer.**

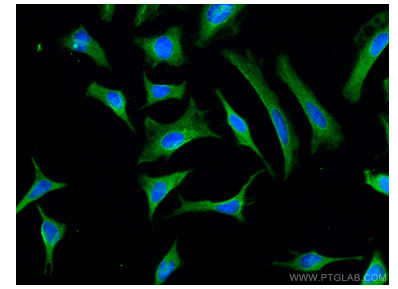
## Selected Validation Data



Various lysates were subjected to SDS PAGE followed by western blot with 67843-1-Ig (KIAA1524 antibody) at dilution of 1:10000 incubated at room temperature for 1.5 hours. This data was developed using the same antibody clone with 67843-1-PBS in a different storage buffer formulation.



HSC-T6 cells were subjected to SDS PAGE followed by western blot with 67843-1-Ig (KIAA1524 antibody) at dilution of 1:10000 incubated at room temperature for 1.5 hours. This data was developed using the same antibody clone with 67843-1-PBS in a different storage buffer formulation.



Immunofluorescent analysis of (-20°C Methanol) fixed HeLa cells using KIAA1524 antibody (67843-1-Ig, Clone: 2A3F3 ) at dilution of 1:400 and CoraLite®488-Conjugated AffiniPure Goat Anti-Mouse IgG(H+L). This data was developed using the same antibody clone with 67843-1-PBS in a different storage buffer formulation.