

For Research Use Only

GIT2 Monoclonal antibody

Catalog Number: 67858-1-Ig



Basic Information

Catalog Number:

67858-1-Ig

Size:

1000 µg/ml

Source:

Mouse

Isotype:

IgG1

Immunogen Catalog Number:

AG0321

GenBank Accession Number:

BC001379

GeneID (NCBI):

9815

UNIPROT ID:

Q14161

Full Name:

G protein-coupled receptor kinase
interacting ArfGAP 2

Calculated MW:

95 kDa

Observed MW:

70-85 kDa

Purification Method:

Protein G purification

CloneNo.:

2D9C5

Recommended Dilutions:

WB 1:5000-1:50000

IHC 1:500-1:2000

Applications

Tested Applications:

IHC, WB, ELISA

Species Specificity:

Human, rat

**Note-IHC: suggested antigen retrieval with
TE buffer pH 9.0; (*) Alternatively, antigen
retrieval may be performed with citrate
buffer pH 6.0**

Positive Controls:

WB : A549 cells, K-562 cells, HSC-T6 cells, HEK-293
cells, HeLa cells

IHC : human prostate cancer tissue,

Background Information

Storage

Storage:

Store at -20°C. Stable for one year after shipment.

Storage Buffer:

PBS with 0.02% sodium azide and 50% glycerol pH 7.3.

Aliquoting is unnecessary for -20°C storage

For technical support and original validation data for this product please contact:

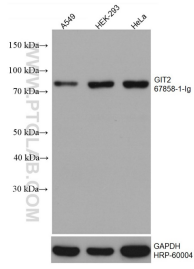
T: 4006900926

E: Proteintech-CN@ptglab.com

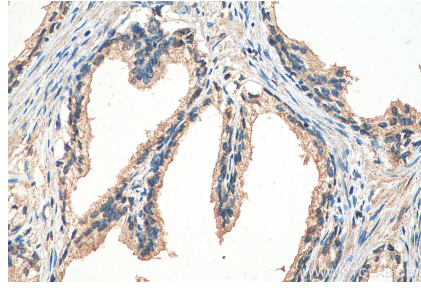
W: ptgcn.com

**This product is exclusively available under Proteintech
Group brand and is not available to purchase from any
other manufacturer.**

Selected Validation Data



Various lysates were subjected to SDS PAGE followed by western blot with 67858-1-ig (GIT2 antibody) at dilution of 1:10000 incubated at room temperature for 1.5 hours. The membrane was stripped and reblotted with HRP-conjugated GAPDH Monoclonal antibody (HRP-60004) as loading control.



Immunohistochemical analysis of paraffin-embedded human prostate cancer tissue slide using 67858-1-ig (GIT2 antibody) at dilution of 1:1000 (under 40x lens). Heat mediated antigen retrieval with Tris-EDTA buffer (pH 9.0).