

For Research Use Only

Synaptophysin Monoclonal antibody



Catalog Number: 67864-1-Ig **9 Publications**

Basic Information

Catalog Number: 67864-1-Ig	GenBank Accession Number: BC064550	Purification Method: Protein A purification
Size: 500 µg/ml	GeneID (NCBI): 6855	CloneNo.: 4E12C4
Source: Mouse	UNIPROT ID: P08247	Recommended Dilutions: WB 1:20000-1:100000 IHC 1:500-1:2000 IF 1:200-1:800
Isotype: IgG1	Full Name: synaptophysin	
Immunogen Catalog Number: AG11803	Calculated MW: 313 aa, 34 kDa	
	Observed MW: 38 kDa	

Applications

Tested Applications:
IF/ICC, IF-P, IHC, WB, ELISA

Cited Applications:
IF, WB

Species Specificity:
Human, Pig, Mouse, Rat, Rabbit

Cited Species:
human, rat, mouse

Note-IHC: suggested antigen retrieval with TE buffer pH 9.0; (*) Alternatively, antigen retrieval may be performed with citrate buffer pH 6.0

Positive Controls:

WB: PC-12 cells, pig brain tissue, rabbit brain tissue, rat brain tissue, mouse brain tissue, pig cerebellum tissue, rabbit cerebellum tissue, rat cerebellum tissue, mouse cerebellum tissue

IHC: mouse brain tissue,

IF: mouse pancreas tissue, Neuro-2a cells, PC-12 cells, mouse brain tissue

Background Information

Synaptophysin (SYP, also known as major synaptic vesicle protein p38) is a 38-kDa integral membrane glycoprotein that regulates synaptic vesicle endocytosis. It is the most abundant synaptic vesicle protein by mass. Synaptophysin is present in neuroendocrine cells and neurons that participate in synaptic transmission. Synaptophysin is a useful marker for identification of neuroendocrine cells and neoplasms. (PMID: 3010302; 21658579)

Notable Publications

Author	Pubmed ID	Journal	Application
Kangyu Jin	36103758	Psychiatry Res	WB
Xu-Qiao Chen	36370135	Alzheimers Dement	WB
Yue Xu	35401120	Front Cell Neurosci	IF

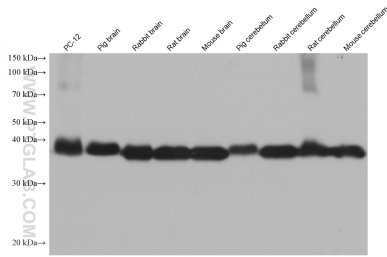
Storage

Storage:
Store at -20°C. Stable for one year after shipment.
Storage Buffer:
PBS with 0.02% sodium azide and 50% glycerol pH 7.3.
Aliquoting is unnecessary for -20°C storage

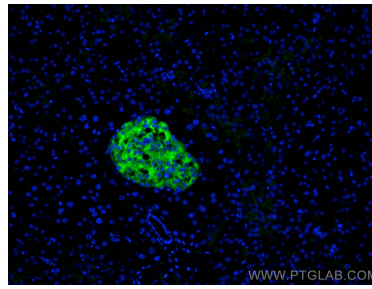
For technical support and original validation data for this product please contact:
T: 4006900926 E: Proteintech-CN@ptglab.com W: ptgcn.com

This product is exclusively available under Proteintech Group brand and is not available to purchase from any other manufacturer.

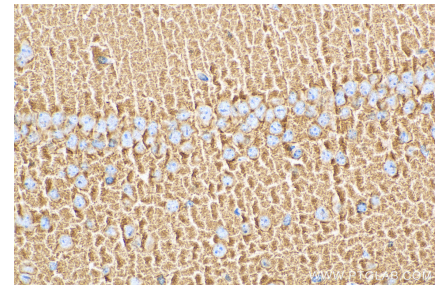
Selected Validation Data



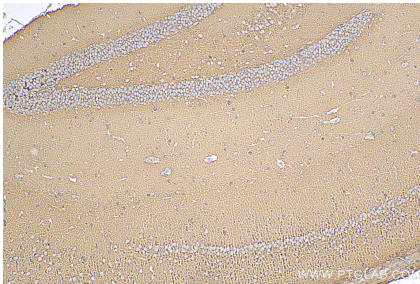
Various lysates were subjected to SDS PAGE followed by western blot with 67864-1-Ig (Synaptophysin antibody) at dilution of 1:100000 incubated at room temperature for 1.5 hours.



Immunofluorescent analysis of (4% PFA) fixed mouse pancreas tissue using Synaptophysin antibody (67864-1-Ig, Clone: 4E12C4) at dilution of 1:400 and CoraLite®488-Conjugated AffiniPure Goat Anti-Mouse IgG(H+L).



Immunohistochemical analysis of paraffin-embedded mouse brain tissue slide using 67864-1-Ig (Synaptophysin antibody) at dilution of 1:1000 (under 40x lens). Heat mediated antigen retrieval with Tris-EDTA buffer (pH 9.0).



Immunohistochemical analysis of paraffin-embedded mouse brain tissue slide using 67864-1-Ig (Synaptophysin antibody) at dilution of 1:1000 (under 10x lens). Heat mediated antigen retrieval with Tris-EDTA buffer (pH 9.0).