

For Research Use Only

# Synaptophysin Monoclonal antibody, PBS Only



Catalog Number: 67864-1-PBS

## Basic Information

<b>Catalog Number:</b> 67864-1-PBS	<b>GenBank Accession Number:</b> BC064550	<b>Purification Method:</b> Protein A purification
<b>Size:</b> 1 mg/ml	<b>GeneID (NCBI):</b> 6855	<b>CloneNo.:</b> 4E12C4
<b>Source:</b> Mouse	<b>UNIPROT ID:</b> P08247	
<b>Isotype:</b> IgG1	<b>Full Name:</b> synaptophysin	
<b>Immunogen Catalog Number:</b> AG11803	<b>Calculated MW:</b> 313 aa, 34 kDa	
	<b>Observed MW:</b> 38 kDa	

## Applications

**Tested Applications:**  
WB, Indirect ELISA, IHC, IF

**Species Specificity:**  
Human, Pig, Mouse, Rat, Rabbit

## Background Information

Synaptophysin (SYP, also known as major synaptic vesicle protein p38) is a 38-kDa integral membrane glycoprotein that regulates synaptic vesicle endocytosis. It is the most abundant synaptic vesicle protein by mass. Synaptophysin is present in neuroendocrine cells and neurons that participate in synaptic transmission. Synaptophysin is a useful marker for identification of neuroendocrine cells and neoplasms. (PMID: 3010302; 21658579)

## Storage

**Storage:**  
Store at -80°C.  
**Storage Buffer:**  
PBS Only

For technical support and original validation data for this product please contact:

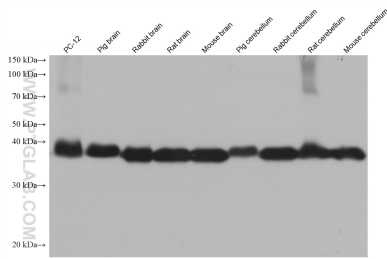
T: 4006900926

E: [Proteintech-CN@ptglab.com](mailto:Proteintech-CN@ptglab.com)

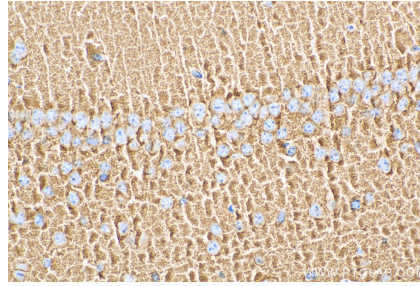
W: [ptgcn.com](http://ptgcn.com)

This product is exclusively available under Proteintech Group brand and is not available to purchase from any other manufacturer.

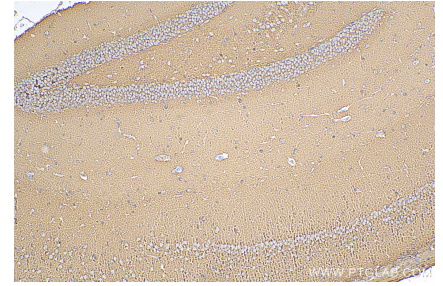
## Selected Validation Data



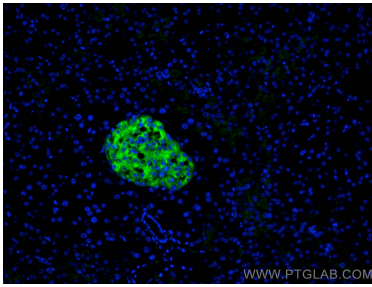
Various lysates were subjected to SDS PAGE followed by western blot with 67864-1-Ig (Synaptophysin antibody) at dilution of 1:100000 incubated at room temperature for 1.5 hours. This data was developed using the same antibody clone with 67864-1-PBS in a different storage buffer formulation.



Immunohistochemical analysis of paraffin-embedded mouse brain tissue slide using 67864-1-Ig (Synaptophysin antibody) at dilution of 1:1000 (under 40x lens). Heat mediated antigen retrieval with Tris-EDTA buffer (pH 9.0). This data was developed using the same antibody clone with 67864-1-PBS in a different storage buffer formulation.



Immunohistochemical analysis of paraffin-embedded mouse brain tissue slide using 67864-1-Ig (Synaptophysin antibody) at dilution of 1:1000 (under 10x lens). Heat mediated antigen retrieval with Tris-EDTA buffer (pH 9.0). This data was developed using the same antibody clone with 67864-1-PBS in a different storage buffer formulation.



Immunofluorescent analysis of (4% PFA) fixed mouse pancreas tissue using Synaptophysin antibody (67864-1-Ig, Clone: 4E12C4 ) at dilution of 1:400 and CoraLite®488-Conjugated AffiniPure Goat Anti-Mouse IgG(H+L). This data was developed using the same antibody clone with 67864-1-PBS in a different storage buffer formulation.