

For Research Use Only

MEK1 Monoclonal antibody, PBS Only (Capture)



Catalog Number: 67872-1-PBS

Featured Product

Basic Information

Catalog Number:

67872-1-PBS

Size:

1mg/ml

Source:

Mouse

Isotype:

IgG1

GenBank Accession Number:

BC139729

GeneID (NCBI):

5604

ENSEMBL Gene ID:

ENSG00000169032

UNIPROT ID:

Q02750

Full Name:

mitogen-activated protein kinase
kinase 1

Calculated MW:

43 kDa

Observed MW:

40-50 kDa

Purification Method:

Protein G purification

CloneNo.:

3F6D7

Applications

Tested Applications:

WB, Cytometric bead array, Indirect ELISA

Species Specificity:

human, mouse, rat

Background Information

MEK1 is also named as MAP2K1 (mitogen-activated protein kinase kinase 1), MAPKK1, PRKMK1, MKK1 and belongs to the MAP kinase kinase subfamily. It is a dual-specificity kinase that mediate ERK1 and ERK2 activation during adhesion and growth factor signaling (PMID:19219045). It also plays an essential role in extra-embryonic ectoderm during placentogenesis.

Storage

Storage:

Store at -80°C.

The product is shipped with ice packs. Upon receipt, store it immediately at -80°C

Storage Buffer:

PBS Only

For technical support and original validation data for this product please contact:

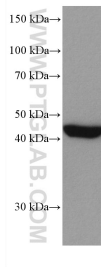
T: 4006900926

E: Proteintech-CN@ptglab.com

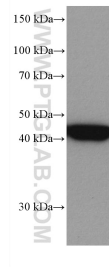
W: ptgcn.com

This product is exclusively available under Proteintech Group brand and is not available to purchase from any other manufacturer.

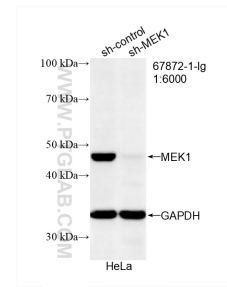
Selected Validation Data



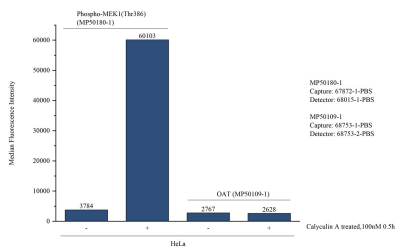
A431 cells were subjected to SDS PAGE followed by western blot with 67872-1-Ig (MEK1 antibody) at dilution of 1:5000 incubated at room temperature for 1.5 hours. This data was developed using the same antibody clone with 67872-1-PBS in a different storage buffer formulation.



Calyculin A treated HeLa cells were subjected to SDS PAGE followed by western blot with 67872-1-Ig (Phospho-MEK1 (Thr292) antibody) at dilution of 1:5000 incubated at room temperature for 1.5 hours. This data was developed using the same antibody clone with 67872-1-PBS in a different storage buffer formulation.



WB result of MEK1 antibody (67872-1-Ig; 1:6000; incubated at room temperature for 1.5 hours) with sh-Control and sh-MEK1 transfected HeLa cells. This data was developed using the same antibody clone with 67872-1-PBS in a different storage buffer formulation.



Cytometric bead array in cell lysate using MP50180-1, Phospho-MEK1 (Thr386) Monoclonal Matched Antibody Pair, PBS Only. Capture antibody: 67872-1-PBS. Detection antibody: 68015-1-PBS. Cell lysate: Non-treated HeLa and Calyculin A treated HeLa (30 μ g/well). Non-related target OAT Monoclonal Matched Antibody Pair (MP50109-1P) was served as control.