

For Research Use Only

TMED10 Monoclonal antibody, PBS Only



Catalog Number: 67876-1-PBS

Basic Information

Catalog Number:

67876-1-PBS

Size:

1mg/ml

Source:

Mouse

Isotype:

IgG2b

Immunogen Catalog Number:

AG7516

GenBank Accession Number:

BC001825

GeneID (NCBI):

10972

UNIPROT ID:

P49755

Full Name:

transmembrane emp24-like trafficking protein 10 (yeast)

Calculated MW:

25 kDa

Observed MW:

21 kDa

Purification Method:

Protein A purification

CloneNo.:

3B11F9

Applications

Tested Applications:

WB, IF, IHC, ELISA

Species Specificity:

Human, Pig, Mouse, Rat

Background Information

Storage

Storage:

Store at -80°C.

Storage Buffer:

PBS Only

For technical support and original validation data for this product please contact:

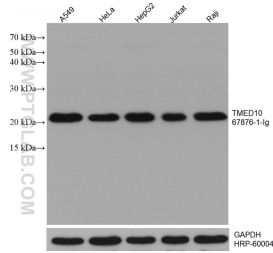
T: 4006900926

E: Proteintech-CN@ptglab.com

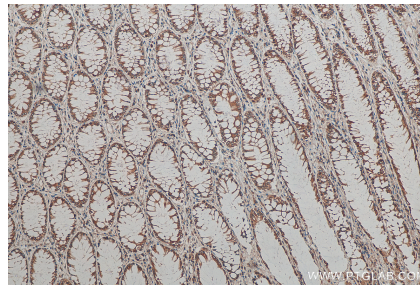
W: ptgcn.com

This product is exclusively available under Proteintech Group brand and is not available to purchase from any other manufacturer.

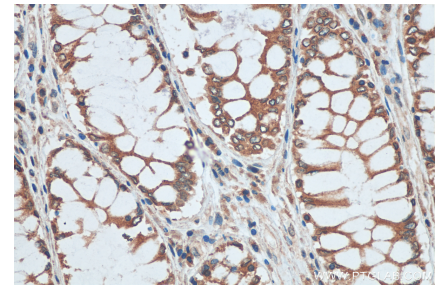
Selected Validation Data



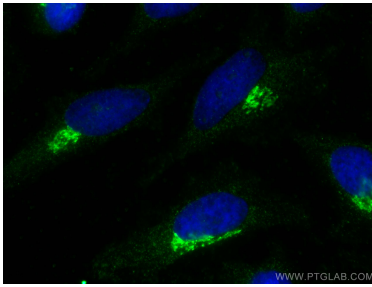
Various lysates were subjected to SDS PAGE followed by western blot with 67876-1-Ig (TMED10 antibody) at dilution of 1:20000 incubated at room temperature for 1.5 hours. The membrane was stripped and reblotted with HRP-conjugated GAPDH Monoclonal antibody (HRP-60004) as loading control. This data was developed using the same antibody clone with 67876-1-PBS in a different storage buffer formulation.



Immunohistochemical analysis of paraffin-embedded human colon cancer tissue slide using 67876-1-Ig (TMED10 antibody) at dilution of 1:2000 (under 10x lens). Heat mediated antigen retrieval with Tris-EDTA buffer (pH 9.0). This data was developed using the same antibody clone with 67876-1-PBS in a different storage buffer formulation.



Immunohistochemical analysis of paraffin-embedded human colon cancer tissue slide using 67876-1-Ig (TMED10 antibody) at dilution of 1:2000 (under 40x lens). Heat mediated antigen retrieval with Tris-EDTA buffer (pH 9.0). This data was developed using the same antibody clone with 67876-1-PBS in a different storage buffer formulation.



Immunofluorescent analysis of (-20°C Methanol) fixed HeLa cells using TMED10 antibody (67876-1-Ig, Clone: 3B11F9) at dilution of 1:800 and CoraLite®488-Conjugated AffiniPure Goat Anti-Mouse IgG(H+L). This data was developed using the same antibody clone with 67876-1-PBS in a different storage buffer formulation.