

For Research Use Only

SLC25A36 Monoclonal antibody, PBS Only



Catalog Number: 67896-1-PBS

Basic Information

Catalog Number:

67896-1-PBS

Size:

1 mg/ml

Source:

Mouse

Isotype:

IgG1

Immunogen Catalog Number:

AG23894

GenBank Accession Number:

BC014064

GeneID (NCBI):

55186

UNIPROT ID:

Q96CQ1

Full Name:

solute carrier family 25, member 36

Purification Method:

Protein G purification

CloneNo.:

1E5E4

Applications

Tested Applications:

WB, Indirect ELISA, IHC

Species Specificity:

Human, Mouse, Rat

Background Information

Storage

Storage:

Store at -80°C.

The product is shipped with ice packs. Upon receipt, store it immediately at -80°C

Storage Buffer:

PBS Only

For technical support and original validation data for this product please contact:

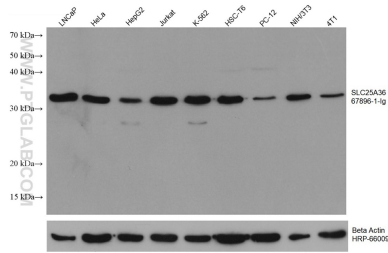
T: 4006900926

E: Proteintech-CN@ptglab.com

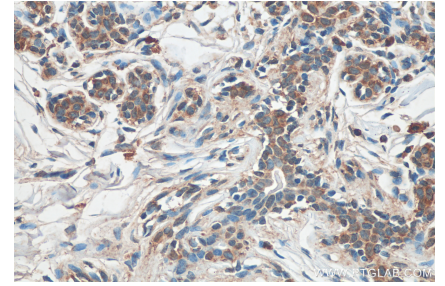
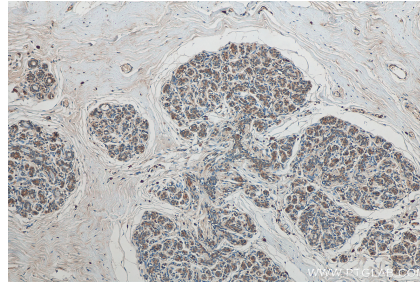
W: ptgcn.com

This product is exclusively available under Proteintech Group brand and is not available to purchase from any other manufacturer.

Selected Validation Data



Various lysates were subjected to SDS PAGE followed by western blot with 67896-1-Ig (SLC25A36 antibody) at dilution of 1:5000 incubated at room temperature for 1.5 hours. The membrane was stripped and reblotted with HRP-conjugated Beta Actin Monoclonal antibody (HRP-66009) as loading control. This data was developed using the same antibody clone with 67896-1-PBS in a different storage buffer formulation.



Immunohistochemical analysis of paraffin-embedded human breast cancer tissue slide using 67896-1-Ig (SLC25A36 antibody) at dilution of 1:500 (under 40x lens). Heat mediated antigen retrieval with Tris-EDTA buffer (pH 9.0). This data was developed using the same antibody clone with 67896-1-PBS in a different storage buffer formulation.