

For Research Use Only

# TRAPA/SSR1 Monoclonal antibody

Catalog Number: 67925-1-Ig



## Basic Information

<b>Catalog Number:</b> 67925-1-Ig	<b>GenBank Accession Number:</b> BC007710	<b>Purification Method:</b> Protein G purification
<b>Size:</b> 1000 µg/ml	<b>GeneID (NCBI):</b> 6745	<b>CloneNo.:</b> 1F2D7
<b>Source:</b> Mouse	<b>UNIPROT ID:</b> P43307	<b>Recommended Dilutions:</b> WB 1:5000-1:50000 IHC 1:1000-1:4000 IF-P 1:200-1:800
<b>Isotype:</b> IgG1	<b>Full Name:</b> signal sequence receptor, alpha	
<b>Immunogen Catalog Number:</b> AG30832	<b>Calculated MW:</b> 34 kDa	
	<b>Observed MW:</b> 34 kDa	

## Applications

### Tested Applications:

IF-P, IHC, WB, ELISA

### Species Specificity:

Human, Mouse, Rat

**Note-IHC: suggested antigen retrieval with TE buffer pH 9.0; (\*) Alternatively, antigen retrieval may be performed with citrate buffer pH 6.0**

### Positive Controls:

**WB:** HeLa cells, HEK-293 cells, HepG2 cells, Jurkat cells, K-562 cells, HSC-T6 cells, PC-12 cells, NIH/3T3 cells, 4T1 cells

**IHC:** human ovary tumor tissue,

**IF-P:** human ovary tumor tissue,

## Background Information

TRAPA (translocon-associated protein subunit alpha), also known as SSR1 (signal sequence receptor subunit alpha), is a 34-kDa single-spanning membrane glycoprotein of the endoplasmic reticulum (ER) (PMID: 8050590). It is a part of the tetrameric TRAP complex (TRAP-alpha, TRAP-beta, TRAP-delta and TRAP-gamma) which functions in regulating the retention of ER resident proteins (PMID: 7916687). The TRAP complex is also involved in endoplasmic reticulum-associated degradation (ERAD) (PMID: 17380188).

## Storage

### Storage:

Store at -20°C. Stable for one year after shipment.

### Storage Buffer:

PBS with 0.02% sodium azide and 50% glycerol pH 7.3.

Aliquoting is unnecessary for -20°C storage

For technical support and original validation data for this product please contact:

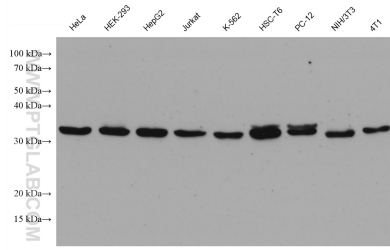
T: 4006900926

E: [Proteintech-CN@ptglab.com](mailto:Proteintech-CN@ptglab.com)

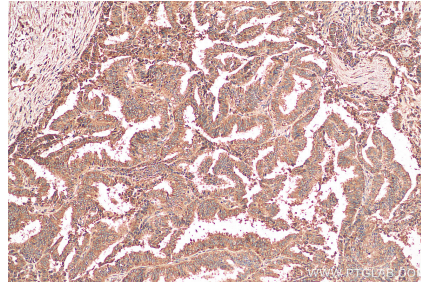
W: [ptgcn.com](http://ptgcn.com)

**This product is exclusively available under Proteintech Group brand and is not available to purchase from any other manufacturer.**

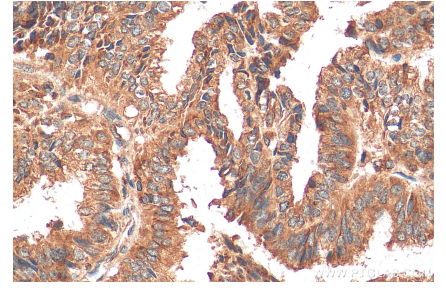
## Selected Validation Data



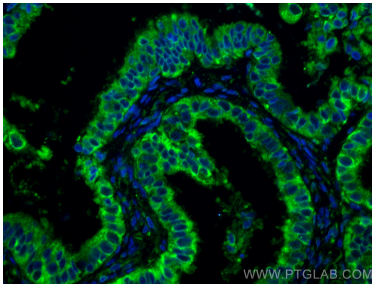
Various lysates were subjected to SDS PAGE followed by western blot with 67925-1-Ig (TRAPA/SSR1 antibody) at dilution of 1:20000 incubated at room temperature for 1.5 hours.



Immunohistochemical analysis of paraffin-embedded human ovary tumor tissue slide using 67925-1-Ig (TRAPA/SSR1 antibody) at dilution of 1:2000 (under 10x lens). Heat mediated antigen retrieval with Tris-EDTA buffer (pH 9.0).



Immunohistochemical analysis of paraffin-embedded human ovary tumor tissue slide using 67925-1-Ig (TRAPA/SSR1 antibody) at dilution of 1:2000 (under 40x lens). Heat mediated antigen retrieval with Tris-EDTA buffer (pH 9.0).



Immunofluorescent analysis of (4% PFA) fixed human ovary tumor tissue using TRAPA/SSR1 antibody (67925-1-Ig, Clone: 1F2D7) at dilution of 1:400 and CoraLite®488-Conjugated AffiniPure Goat Anti-Mouse IgG(H+L).