

For Research Use Only

# TRAPA, SSR1 Monoclonal antibody, PBS Only (Capture)

Catalog Number:67925-4-PBS



## Basic Information

Catalog Number: 67925-4-PBS	GenBank Accession Number: BC007710	Purification Method: Protein G purification
Size: 1 mg/ml	GeneID (NCBI): 6745	CloneNo.: 2F10C4
Source: Mouse	UNIPROT ID: P43307	
Isotype: IgG1	Full Name: signal sequence receptor, alpha	
Immunogen Catalog Number: AG30832	Calculated MW: 34 kDa	

## Applications

**Tested Applications:**  
Cytometric bead array, Indirect ELISA

**Species Specificity:**  
human

## Background Information

### Storage

**Storage:**  
Store at -80°C.  
**The product is shipped with ice packs. Upon receipt, store it immediately at -80°C**

**Storage Buffer:**  
PBS Only

For technical support and original validation data for this product please contact:

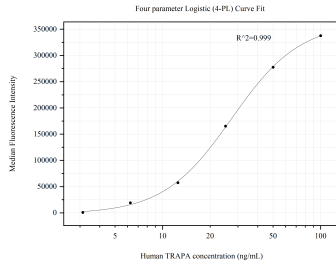
T: 4006900926

E: [Proteintech-CN@ptglab.com](mailto:Proteintech-CN@ptglab.com)

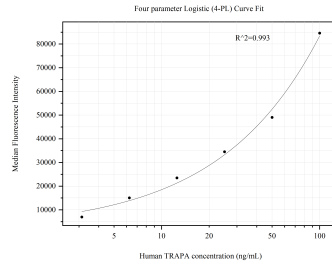
W: [ptgcn.com](http://ptgcn.com)

**This product is exclusively available under Proteintech Group brand and is not available to purchase from any other manufacturer.**

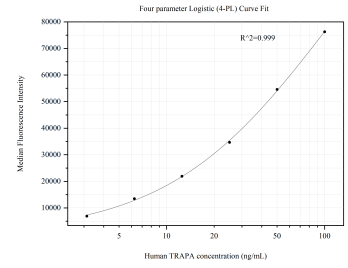
## Selected Validation Data



Cytometric bead array standard curve of MP50817-2, TRAPA, SSR1 Monoclonal Matched Antibody Pair, PBS Only. Capture antibody: 67925-4-PBS. Detection antibody: 67925-3-PBS. Standard:Ag30832. Range: 3.125-100 ng/mL



Cytometric bead array standard curve of MP50817-3, TRAPA, SSR1 Monoclonal Matched Antibody Pair, PBS Only. Capture antibody: 67925-4-PBS. Detection antibody: 67925-5-PBS. Standard:Ag30832. Range: 3.125-100 ng/mL



Cytometric bead array standard curve of MP50817-4, TRAPA, SSR1 Monoclonal Matched Antibody Pair, PBS Only. Capture antibody: 67925-4-PBS. Detection antibody: 67925-6-PBS. Standard:Ag30832. Range: 3.125-100 ng/mL