

For Research Use Only

# TRAPA, SSR1 Monoclonal antibody, PBS Only (Detector)

Catalog Number: 67925-5-PBS



## Basic Information

<b>Catalog Number:</b> 67925-5-PBS	<b>GenBank Accession Number:</b> BC007710	<b>Purification Method:</b> Protein A Magarose purification
<b>Size:</b> 1 mg/ml	<b>GeneID (NCBI):</b> 6745	<b>CloneNo.:</b> 1F5F5
<b>Source:</b> Mouse	<b>UNIPROT ID:</b> P43307	
<b>Isotype:</b> IgG2a	<b>Full Name:</b> signal sequence receptor, alpha	
<b>Immunogen Catalog Number:</b> AG30832	<b>Calculated MW:</b> 34 kDa	

## Applications

**Tested Applications:**  
Cytometric bead array, Indirect ELISA

**Species Specificity:**  
human

## Background Information

### Storage

**Storage:**  
Store at -80°C.  
**The product is shipped with ice packs. Upon receipt, store it immediately at -80°C**

**Storage Buffer:**  
PBS Only

For technical support and original validation data for this product please contact:

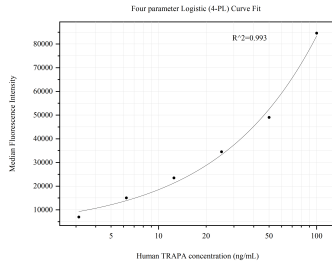
T: 4006900926

E: [Proteintech-CN@ptglab.com](mailto:Proteintech-CN@ptglab.com)

W: [ptgcn.com](http://ptgcn.com)

**This product is exclusively available under Proteintech Group brand and is not available to purchase from any other manufacturer.**

## Selected Validation Data



Cytometric bead array standard curve of MP50817-3, TRAPA, SSR1 Monoclonal Matched Antibody Pair, PBS Only. Capture antibody: 67925-4-PBS. Detection antibody: 67925-5-PBS. Standard: Ag30832. Range: 3.125-100 ng/mL.