

For Research Use Only

# SLC36A3 Monoclonal antibody, PBS Only



Catalog Number: 67929-1-PBS

## Basic Information

<b>Catalog Number:</b> 67929-1-PBS	<b>GenBank Accession Number:</b> BC101092	<b>Purification Method:</b> Protein G purification
<b>Size:</b> 1 mg/ml	<b>GeneID (NCBI):</b> 285641	<b>CloneNo.:</b> 1A8E6
<b>Source:</b> Mouse	<b>UNIPROT ID:</b> Q495N2	
<b>Isotype:</b> IgG1	<b>Full Name:</b> solute carrier family 36 (proton/amino acid symporter), member 3	
<b>Immunogen Catalog Number:</b> AG16556	<b>Calculated MW:</b> 511 aa, 56 kDa	
	<b>Observed MW:</b> 51 kDa	

## Applications

**Tested Applications:**  
WB, IF, IHC, Indirect ELISA

**Species Specificity:**  
Human, Mouse

## Background Information

## Storage

**Storage:**  
Store at -80°C.  
**The product is shipped with ice packs. Upon receipt, store it immediately at -80°C**

**Storage Buffer:**  
PBS Only

For technical support and original validation data for this product please contact:

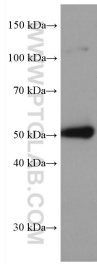
T: 4006900926

E: [Proteintech-CN@ptglab.com](mailto:Proteintech-CN@ptglab.com)

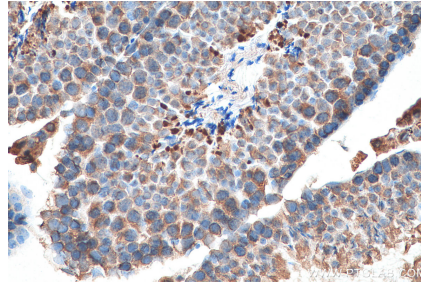
W: [ptgcn.com](http://ptgcn.com)

**This product is exclusively available under Proteintech Group brand and is not available to purchase from any other manufacturer.**

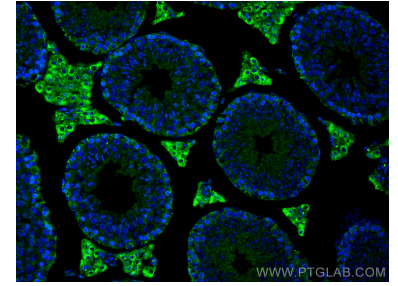
## Selected Validation Data



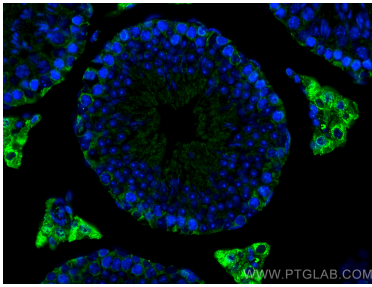
unboiled mouse testis tissue were subjected to SDS PAGE followed by western blot with 67929-1-Ig (SLC36A3 antibody) at dilution of 1:3000 incubated at room temperature for 1.5 hours. This data was developed using the same antibody clone with 67929-1-PBS in a different storage buffer formulation.



Immunohistochemical analysis of paraffin-embedded mouse testis tissue slide using 67929-1-Ig (SLC36A3 antibody) at dilution of 1:1000 (under 40x lens). Heat mediated antigen retrieval with Tris-EDTA buffer (pH 9.0). This data was developed using the same antibody clone with 67929-1-PBS in a different storage buffer formulation.



Immunofluorescent analysis of (4% PFA) fixed mouse testis tissue using SLC36A3 antibody (67929-1-Ig, Clone: 1A8E6) at dilution of 1:400 and CoraLite®488-Conjugated AffiniPure Goat Anti-Mouse IgG(H+L). This data was developed using the same antibody clone with 67929-1-PBS in a different storage buffer formulation.



Immunofluorescent analysis of (4% PFA) fixed mouse testis tissue using SLC36A3 antibody (67929-1-Ig, Clone: 1A8E6) at dilution of 1:400 and CoraLite®488-Conjugated AffiniPure Goat Anti-Mouse IgG(H+L). This data was developed using the same antibody clone with 67929-1-PBS in a different storage buffer formulation.