

For Research Use Only

# SETD1A Monoclonal antibody, PBS Only



Catalog Number: 67936-1-PBS

Featured Product

## Basic Information

Catalog Number:

67936-1-PBS

Size:

1 mg/ml

Source:

Mouse

Isotype:

IgG1

Immunogen Catalog Number:

AG30424

GenBank Accession Number:

NM\_014712

GeneID (NCBI):

9739

UNIPROT ID:

O15047

Full Name:

SET domain containing 1A

Calculated MW:

186 kDa

Observed MW:

270 kDa

Purification Method:

Protein G purification

CloneNo.:

1C2G12

## Applications

Tested Applications:

WB, Indirect ELISA

Species Specificity:

Human, mouse, rat

## Background Information

SETD1A is a SET domain-containing methyltransferase involved in the epigenetic regulation of transcription (PMID:12670868). It is the main catalytic component of a multiprotein complex that methylates lysine 4 of histone H3, a histone mark associated with gene activation (PMID:29937342). Responsible for H3K4me3 enriched promoters and transcriptional programming of inner mass stem cells and neuron progenitors during embryogenesis (PMID:31197650). Does not methylate 'Lys-4' of histone H3 if the neighboring 'Lys-9' residue is already methylated (PubMed:12670868). SETD1A has a calculated molecular weight of 186 kDa, and a 258 kDa band was also reported (PMID: 31076518).

## Storage

Storage:

Store at -80°C.

The product is shipped with ice packs. Upon receipt, store it immediately at -80°C

Storage Buffer:

PBS Only

For technical support and original validation data for this product please contact:

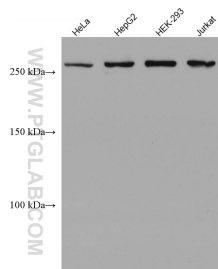
T: 4006900926

E: Proteintech-CN@ptglab.com

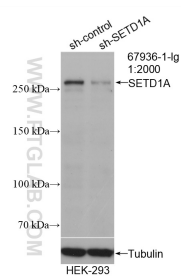
W: ptgcn.com

This product is exclusively available under Proteintech Group brand and is not available to purchase from any other manufacturer.

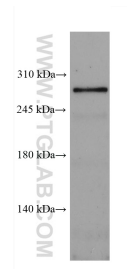
## Selected Validation Data



Various lysates were subjected to SDS PAGE followed by western blot with 67936-1-Ig (SETD1A antibody) at dilution of 1:10000 and incubated at room temperature for 1.5 hours. This data was developed using the same antibody clone with 67936-1-PBS in a different storage buffer formulation.



WB result of SETD1A antibody (67936-1-Ig; 1:2000; incubated at room temperature for 1.5 hours) with sh-Control and sh-SETD1A transfected HEK-293 cells. This data was developed using the same antibody clone with 67936-1-PBS in a different storage buffer formulation.



Mouse brain tissue was subjected to SDS PAGE followed by western blot with 67936-1-Ig (SETD1A antibody) at a dilution of 1:3000 and incubated at room temperature for 1.5 hours. This data was developed using the same antibody clone with 67936-1-PBS in a different storage buffer formulation.