

For Research Use Only

PSMA3 Monoclonal antibody, PBS Only



Catalog Number: 67938-1-PBS

Basic Information

Catalog Number: 67938-1-PBS	GenBank Accession Number: BC029402	Purification Method: Protein A purification
Size: 1 mg/ml	GeneID (NCBI): 5684	CloneNo.: 1A8C9
Source: Mouse	UNIPROT ID: P25788	
Isotype: IgG2b	Full Name: proteasome (prosome, macropain) subunit, alpha type, 3	
Immunogen Catalog Number: AG30552	Calculated MW: 255 aa, 28 kDa	
	Observed MW: 28 kDa	

Applications

Tested Applications:
WB, Indirect ELISA, IHC

Species Specificity:
Human, mouse, rat

Background Information

PSMA3 (Proteasome subunit alpha type-3) is also named as HC8, PSC8 and belongs to the peptidase T1A family. The proteasome is a multicatalytic protease complex that catalyzes an energy-dependent, extralysosomal proteolytic pathway responsible for selective elimination of proteins with aberrant structures and naturally occurring short-lived proteins related to metabolic regulation and cell cycle progression. It has 2 isoforms produced by alternative splicing.

Storage

Storage:
Store at -80°C.
The product is shipped with ice packs. Upon receipt, store it immediately at -80°C

Storage Buffer:
PBS Only

For technical support and original validation data for this product please contact:

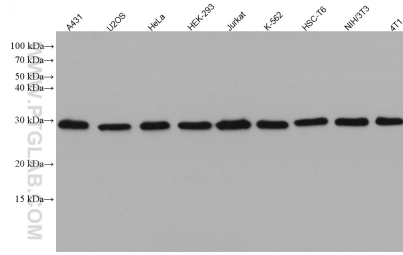
T: 4006900926

E: Proteintech-CN@ptglab.com

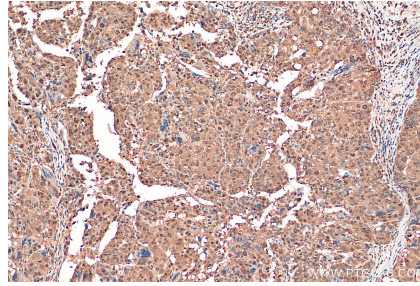
W: ptgcn.com

This product is exclusively available under Proteintech Group brand and is not available to purchase from any other manufacturer.

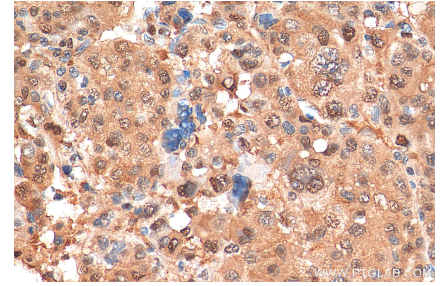
Selected Validation Data



Various lysates were subjected to SDS PAGE followed by western blot with 67938-1-Ig (PSMA3 antibody) at dilution of 1:20000 incubated at room temperature for 1.5 hours. This data was developed using the same antibody clone with 67938-1-PBS in a different storage buffer formulation.



Immunohistochemical analysis of paraffin-embedded human liver cancer tissue slide using 67938-1-Ig (PSMA3 antibody) at dilution of 1:500 (under 10x lens). Heat mediated antigen retrieval with Tris-EDTA buffer (pH 9.0). This data was developed using the same antibody clone with 67938-1-PBS in a different storage buffer formulation.



Immunohistochemical analysis of paraffin-embedded human liver cancer tissue slide using 67938-1-Ig (PSMA3 antibody) at dilution of 1:500 (under 40x lens). Heat mediated antigen retrieval with Tris-EDTA buffer (pH 9.0). This data was developed using the same antibody clone with 67938-1-PBS in a different storage buffer formulation.