

For Research Use Only

ABCE1 Monoclonal antibody, PBS Only



Catalog Number: 67960-1-PBS

Basic Information

| | | |
|---|--|---|
| Catalog Number: 67960-1-PBS | GenBank Accession Number: BC016283 | Purification Method: Protein A purification |
| Size: 1 mg/ml | GeneID (NCBI): 6059 | CloneNo.: 1B7E8 |
| Source: Mouse | UNIPROT ID: P61221 | |
| Isotype: IgG2b | Full Name: ATP-binding cassette, sub-family E (OABP), member 1 | |
| Immunogen Catalog Number: AG28493 | Calculated MW: 599 aa, 67 kDa | |
| | Observed MW: 68 kDa | |

Applications

Tested Applications:
WB, Indirect ELISA, IHC, IF

Species Specificity:
Human, Mouse, Rat

Background Information

ABCE1 is an ATPase that is a member of the ATP-binding cassette (ABC) transporters superfamily and OABP subfamily, it is an essential and highly conserved protein that is required for both eukaryotic translation initiation as well as ribosome biogenesis.

Storage

Storage:
Store at -80°C.

Storage Buffer:
PBS Only

For technical support and original validation data for this product please contact:

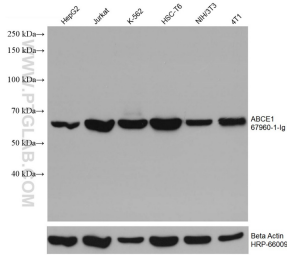
T: 4006900926

E: Proteintech-CN@ptglab.com

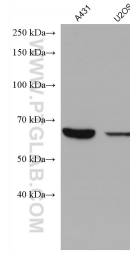
W: ptgcn.com

This product is exclusively available under Proteintech Group brand and is not available to purchase from any other manufacturer.

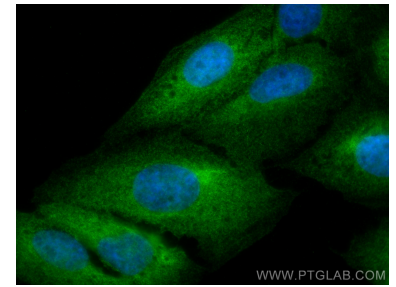
Selected Validation Data



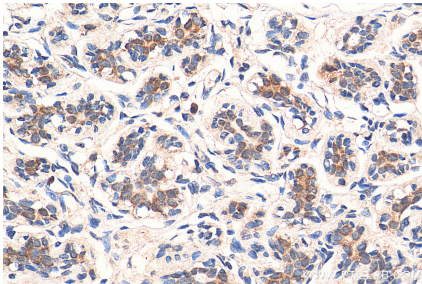
Various lysates were subjected to SDS PAGE followed by western blot with 67960-1-Ig (ABCE1 antibody) at dilution of 1:10000 incubated at room temperature for 1.5 hours. The membrane was stripped and reblotted with HRP-conjugated Beta Actin Monoclonal antibody (HRP-66009) as loading control. This data was developed using the same antibody clone with 67960-1-PBS in a different storage buffer formulation.



Various lysates were subjected to SDS PAGE followed by western blot with 67960-1-Ig (ABCE1 antibody) at dilution of 1:10000 incubated at room temperature for 1.5 hours. This data was developed using the same antibody clone with 67960-1-PBS in a different storage buffer formulation.



Immunofluorescent analysis of (4% PFA) fixed U2OS cells using ABCE1 antibody (67960-1-Ig, Clone: 1B7E8) at dilution of 1:400 and CoraLite@488-Conjugated AffiniPure Goat Anti-Mouse IgG(H+L). This data was developed using the same antibody clone with 67960-1-PBS in a different storage buffer formulation.



Immunohistochemical analysis of paraffin-embedded human breast cancer tissue slide using 67960-1-Ig (ABCE1 antibody) at dilution of 1:1000 (under 40x lens). Heat mediated antigen retrieval with Tris-EDTA buffer (pH 9.0). This data was developed using the same antibody clone with 67960-1-PBS in a different storage buffer formulation.