

For Research Use Only

MFSD2 Monoclonal antibody, PBS Only



Catalog Number: 67965-1-PBS

Basic Information

Catalog Number:

67965-1-PBS

Size:

1mg/ml

Source:

Mouse

Isotype:

IgG2a

Immunogen Catalog Number:

AG31028

GenBank Accession Number:

BC092414

GeneID (NCBI):

84879

UNIPROT ID:

Q8NA29

Full Name:

major facilitator superfamily domain containing 2

Calculated MW:

543 aa, 60 kDa

Observed MW:

60 kDa

Purification Method:

Protein A purification

CloneNo.:

2D2B4

Applications

Tested Applications:

WB, IF-P, Indirect ELISA

Species Specificity:

human, mouse

Background Information

MFSD2, also named as MFSD2A, belongs to a large family of presumptive carbohydrate transporters with 10-12 membrane-spanning domains, is located at chromosomal position 1p34.2, and is conserved in evolution. It plays a role in thermogenesis via beta-adrenergic signaling pathway. It may be the main plasma membrane tunicamycin transporter. MFSD2 has three isoforms with MW 50 kDa and 59-60 kDa.

Storage

Storage:

Store at -80°C.

The product is shipped with ice packs. Upon receipt, store it immediately at -80°C

Storage Buffer:

PBS Only

For technical support and original validation data for this product please contact:

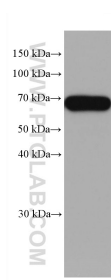
T: 4006900926

E: Proteintech-CN@ptglab.com

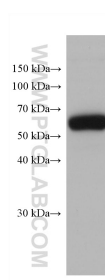
W: ptgcn.com

This product is exclusively available under Proteintech Group brand and is not available to purchase from any other manufacturer.

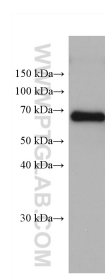
Selected Validation Data



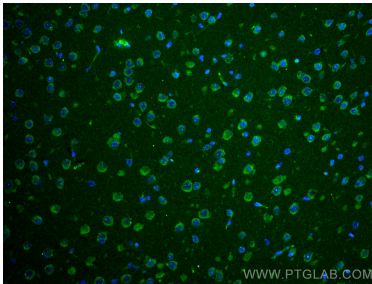
human testis tissue were subjected to SDS PAGE followed by western blot with 67965-1-Ig (MFSD2 antibody) at dilution of 1:5200 incubated at room temperature for 1.5 hours. This data was developed using the same antibody clone with 67965-1-PBS in a different storage buffer formulation.



human testis tissue were subjected to SDS PAGE followed by western blot with 67965-1-Ig (MFSD2 antibody) at dilution of 1:10000 incubated at room temperature for 1.5 hours. This data was developed using the same antibody clone with 67965-1-PBS in a different storage buffer formulation.



human placenta tissue were subjected to SDS PAGE followed by western blot with 67965-1-Ig (MFSD2 antibody) at dilution of 1:10000 incubated at room temperature for 1.5 hours. This data was developed using the same antibody clone with 67965-1-PBS in a different storage buffer formulation.



Immunofluorescent analysis of (4% PFA) fixed mouse brain tissue using MFSD2 antibody (67965-1-Ig, Clone: 2D2B4) at dilution of 1:400 and CoraLite®488-Conjugated AffiniPure Goat Anti-Mouse IgG(H+L). This data was developed using the same antibody clone with 67965-1-PBS in a different storage buffer formulation.