

For Research Use Only

# Flotillin 1 Monoclonal antibody, PBS Only



Catalog Number: 67968-1-PBS

## Basic Information

<b>Catalog Number:</b> 67968-1-PBS	<b>GenBank Accession Number:</b> BC001146	<b>Purification Method:</b> Protein A purification
<b>Size:</b> 1 mg/ml	<b>GeneID (NCBI):</b> 10211	<b>CloneNo.:</b> 1D6C6
<b>Source:</b> Mouse	<b>UNIPROT ID:</b> O75955	
<b>Isotype:</b> IgG2b	<b>Full Name:</b> flotillin 1	
<b>Immunogen Catalog Number:</b> AG8694	<b>Calculated MW:</b> 47 kDa	
	<b>Observed MW:</b> 47 kDa	

## Applications

**Tested Applications:**  
WB, Indirect ELISA

**Species Specificity:**  
Human, Mouse, Rat, Pig, Rabbit

## Background Information

Flotillins are membrane-associated proteins that contain two homologous isoforms, flotillin 1 (FLOT1) and flotillin 2 (FLOT2). They are highly conserved and widely expressed proteins that commonly used as markers of lipid rafts. Flotillins are involved in various signaling pathways, cell adhesion, membrane trafficking and axonal growth.

## Storage

**Storage:**  
Store at -80°C.

**Storage Buffer:**  
PBS Only

For technical support and original validation data for this product please contact:

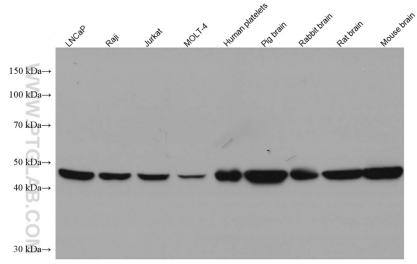
T: 4006900926

E: [Proteintech-CN@ptglab.com](mailto:Proteintech-CN@ptglab.com)

W: [ptgcn.com](http://ptgcn.com)

This product is exclusively available under Proteintech Group brand and is not available to purchase from any other manufacturer.

## Selected Validation Data



Various lysates were subjected to SDS PAGE followed by western blot with 67968-1-Ig (Flotillin 1 antibody) at dilution of 1:20000 incubated at room temperature for 1.5 hours. This data was developed using the same antibody clone with 67968-1-PBS in a different storage buffer formulation.