

For Research Use Only

MYD88 Monoclonal antibody, PBS Only



Catalog Number: 67969-1-PBS

Basic Information

Catalog Number: 67969-1-PBS	GenBank Accession Number: BC013589	Purification Method: Protein A purification
Size: 1 mg/ml	GeneID (NCBI): 4615	CloneNo.: 2E10D3
Source: Mouse	UNIPROT ID: Q99836	
Isotype: IgG2b	Full Name: myeloid differentiation primary response gene (88)	
Immunogen Catalog Number: AG27659	Calculated MW: 33 kDa	
	Observed MW: 33 kDa	

Applications

Tested Applications:
WB,IHC,IF,ELISA

Species Specificity:
Human, mouse, rat, rabbit, pig

Background Information

MYD88 is a cytosolic adaptor protein that plays a central role in the innate and adaptive immune response. MYD88 is the key adaptor protein for the interleukin-1 receptor (IL-1R) and most Toll-like receptors (TLRs), which are essential for innate immunity and pathogen-associated molecular pattern recognition. Mutations in the MyD88 gene lead to the development of cancer in humans and mice suggesting that MyD88 also plays a cell autonomous role in tissue homeostasis.

Storage

Storage:
Store at -20°C. Stable for one year after shipment.

Storage Buffer:
PBS only

Aliquoting is unnecessary for -20°C storage

For technical support and original validation data for this product please contact:

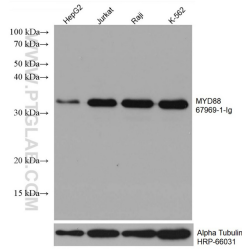
T: 4006900926

E: Proteintech-CN@ptglab.com

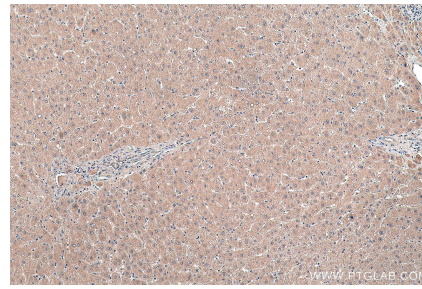
W: ptgcn.com

This product is exclusively available under Proteintech Group brand and is not available to purchase from any other manufacturer.

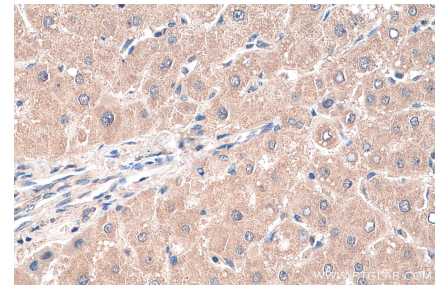
Selected Validation Data



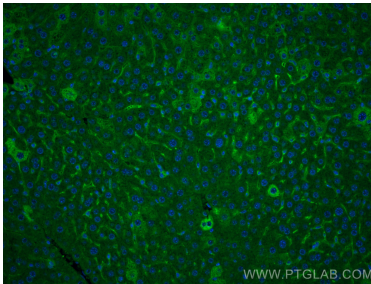
Various lysates were subjected to SDS PAGE followed by western blot with 67969-1-Ig (MYD88 antibody) at dilution of 1:5000 incubated at room temperature for 1.5 hours. The membrane was stripped and reblotted with HRP-conjugated Alpha Tubulin Monoclonal antibody (HRP-66031) as loading control. This data was developed using the same antibody clone with 67969-1-PBS in a different storage buffer formulation.



Immunohistochemical analysis of paraffin-embedded human liver tissue slide using 67969-1-Ig (MYD88 antibody) at dilution of 1:500 (under 10x lens). Heat mediated antigen retrieval with Tris-EDTA buffer (pH 9.0). This data was developed using the same antibody clone with 67969-1-PBS in a different storage buffer formulation.



Immunohistochemical analysis of paraffin-embedded human liver tissue slide using 67969-1-Ig (MYD88 antibody) at dilution of 1:500 (under 40x lens). Heat mediated antigen retrieval with Tris-EDTA buffer (pH 9.0). This data was developed using the same antibody clone with 67969-1-PBS in a different storage buffer formulation.



Immunofluorescent analysis of (4% PFA) fixed mouse liver tissue using MYD88 antibody (67969-1-Ig, Clone: 2E10D3) at dilution of 1:400 and CoraLite®488-Conjugated AffiniPure Goat Anti-Mouse IgG(H+L). This data was developed using the same antibody clone with 67969-1-PBS in a different storage buffer formulation.