

For Research Use Only

LIMK1 Monoclonal antibody, PBS Only

Catalog Number: 67974-1-PBS

Featured Product



Basic Information

Catalog Number:

67974-1-PBS

Size:

1mg/ml

Source:

Mouse

Isotype:

IgG2a

Immunogen Catalog Number:

AG28862

GenBank Accession Number:

BC152982

GeneID (NCBI):

3984

UNIPROT ID:

P53667

Full Name:

LIM domain kinase 1

Calculated MW:

647 aa, 73 kDa

Observed MW:

65 kDa

Purification Method:

Protein A purification

CloneNo.:

2B11E9

Applications

Tested Applications:

WB, IHC, IF/ICC, Indirect ELISA

Species Specificity:

human, mouse, rat, pig, rabbit

Background Information

LIMK1, also named LIMK, belongs to the protein kinase superfamily and TKL Ser/Thr protein kinase family. LIMK1 is a protein kinase which regulates actin filament dynamics. Phosphorylates and inactivates the actin binding/depolymerizing factor cofilin, thereby stabilizing the actin cytoskeleton. Isoform 3 has a dominant negative effect on actin cytoskeletal changes. LIMK1 may be involved in brain development. The antibody has no cross-reaction with LIMK2.

Storage

Storage:

Store at -80°C.

The product is shipped with ice packs. Upon receipt, store it immediately at -80°C

Storage Buffer:

PBS Only

For technical support and original validation data for this product please contact:

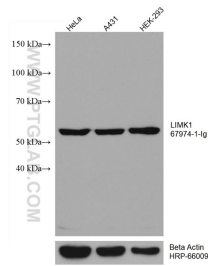
T: 4006900926

E: Proteintech-CN@ptglab.com

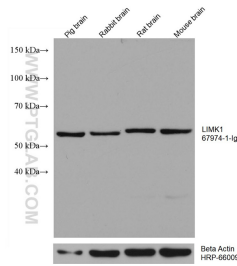
W: ptgcn.com

This product is exclusively available under Proteintech Group brand and is not available to purchase from any other manufacturer.

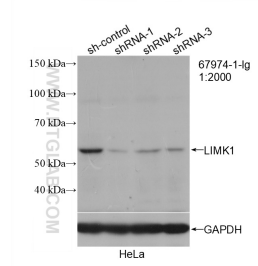
Selected Validation Data



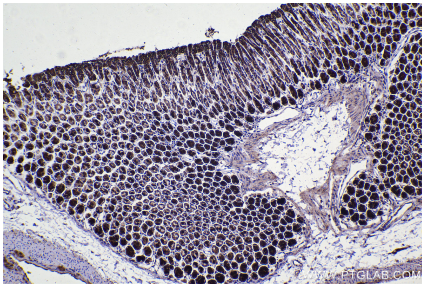
Various lysates were subjected to SDS PAGE followed by western blot with 67974-1-Ig (LIMK1 antibody) at dilution of 1:5000 incubated at room temperature for 1.5 hours. The membrane was stripped and reblotted with HRP-conjugated Beta Actin Monoclonal antibody (HRP-66009) as loading control. This data was developed using the same antibody clone with 67974-1-PBS in a different storage buffer formulation.



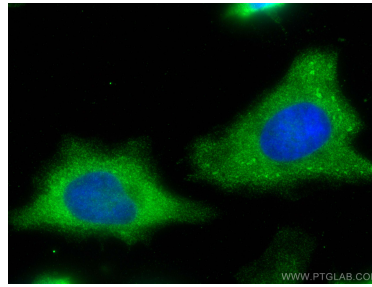
Various lysates were subjected to SDS PAGE followed by western blot with 67974-1-Ig (LIMK1 antibody) at dilution of 1:5000 incubated at room temperature for 1.5 hours. The membrane was stripped and reblotted with HRP-conjugated Beta Actin Monoclonal antibody (HRP-66009) as loading control. This data was developed using the same antibody clone with 67974-1-PBS in a different storage buffer formulation.



WB result of LIMK1 antibody (67974-1-Ig; 1:2000; incubated at room temperature for 1.5 hours) with sh-Control and sh-LIMK1 transfected HeLa cells. This data was developed using the same antibody clone with 67974-1-PBS in a different storage buffer formulation.



Immunohistochemical analysis of paraffin-embedded mouse stomach tissue slide using 67974-1-Ig (LIMK1 antibody) at dilution of 1:2000 (under 10x lens). Heat mediated antigen retrieval with Tris-EDTA buffer (pH 9.0). This data was developed using the same antibody clone with 67974-1-PBS in a different storage buffer formulation.



Immunofluorescent analysis of (-20°C Methanol) fixed HeLa cells using LIMK1 antibody (67974-1-Ig, Clone: 2B11E9) at dilution of 1:1000 and Coralite@488-Conjugated AffiniPure Goat Anti-Mouse IgG(H+L). This data was developed using the same antibody clone with 67974-1-PBS in a different storage buffer formulation.