

For Research Use Only

# RPA2 Monoclonal antibody, PBS Only



Catalog Number: 67999-1-PBS

## Basic Information

<b>Catalog Number:</b> 67999-1-PBS	<b>GenBank Accession Number:</b> BC001630	<b>Purification Method:</b> Protein G purification
<b>Size:</b> 1 mg/ml	<b>GeneID (NCBI):</b> 6118	<b>CloneNo.:</b> 1B9H11
<b>Source:</b> Mouse	<b>UNIPROT ID:</b> P15927	
<b>Isotype:</b> IgG1	<b>Full Name:</b> replication protein A2, 32kDa	
<b>Immunogen Catalog Number:</b> AG24783	<b>Calculated MW:</b> 29 kDa	
	<b>Observed MW:</b> 30 kDa	

## Applications

**Tested Applications:**  
WB, Indirect ELISA, IF

**Species Specificity:**  
Human, Mouse, Rat, Pig, rabbit

## Background Information

RPA2, a subunit of the heterotrimeric replication protein A (RPA) complex, is overexpressed in various cancers. RPA2 is a major target for upstream kinases, including CDKs and the three PIKKs (ATR, ataxia-telangiectasia mutated [ATM], and DNA-PK). RPA2 comprises multiple critical Ser/Thr residues that are phosphorylated in sequential order in response to genotoxic stress.

## Storage

**Storage:**  
Store at -80°C.

**Storage Buffer:**  
PBS Only

For technical support and original validation data for this product please contact:

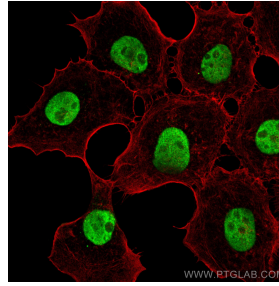
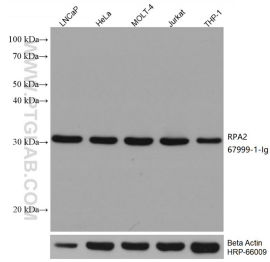
T: 4006900926

E: [Proteintech-CN@ptglab.com](mailto:Proteintech-CN@ptglab.com)

W: [ptgcn.com](http://ptgcn.com)

**This product is exclusively available under Proteintech Group brand and is not available to purchase from any other manufacturer.**

## Selected Validation Data



Various lysates were subjected to SDS PAGE followed by western blot with 67999-1-Ig (RPA2 antibody) at dilution of 1:20000 incubated at room temperature for 1.5 hours. The membrane was stripped and reblotted with HRP-conjugated Beta Actin Monoclonal antibody (HRP-66009) as loading control. This data was developed using the same antibody clone with 67999-1-PBS in a different storage buffer formulation.

Immunofluorescent analysis of (4% PFA) fixed A431 cells using RPA2 antibody (67999-1-Ig, Clone: 1B9H11 ) at dilution of 1:4000 and CoraLite®488-Conjugated AffiniPure Goat Anti-Mouse IgG(H+L), (CL594-Phalloidin, red). This data was developed using the same antibody clone with 67999-1-PBS in a different storage buffer formulation.