

For Research Use Only

# Alpha B Crystallin Monoclonal antibody

Catalog Number: 68001-1-Ig **1 Publications**



## Basic Information

<b>Catalog Number:</b> 68001-1-Ig	<b>GenBank Accession Number:</b> BC007008	<b>Purification Method:</b> Protein A purification
<b>Size:</b> 1000 µg/ml	<b>GeneID (NCBI):</b> 1410	<b>CloneNo.:</b> 1B4C3
<b>Source:</b> Mouse	<b>UNIPROT ID:</b> P02511	<b>Recommended Dilutions:</b> WB 1:5000-1:50000 IHC 1:1000-1:4000
<b>Isotype:</b> IgG2b	<b>Full Name:</b> crystallin, alpha B	
<b>Immunogen Catalog Number:</b> AG8656	<b>Calculated MW:</b> 175 aa, 20 kDa	
	<b>Observed MW:</b> 20-22 kDa	

## Applications

<b>Tested Applications:</b> IHC, WB, ELISA	<b>Positive Controls:</b> WB : mouse eye tissue, rat eye tissue
<b>Cited Applications:</b> IP	<b>IHC :</b> mouse eye tissue,
<b>Species Specificity:</b> Human, mouse, rat	
<b>Cited Species:</b> human	

**Note-IHC: suggested antigen retrieval with TE buffer pH 9.0; (\*) Alternatively, antigen retrieval may be performed with citrate buffer pH 6.0**

## Background Information

Alpha B-crystallin, encoded by CRYAB gene, is multifunctional, serving as both a major structural protein in the lens and a small heat-shock protein in other tissues in mammals. Alpha B-crystallin may contribute to the transparency and refractive index of the lens. Single nucleotide polymorphisms (SNPs) in the promoter region of CRYAB gene have been associated with in multiple sclerosis. Mutations in the CRYAB gene cause distinct clinical phenotypes including isolated posterior polar cataract, myofibrillar myopathy, cardiomyopathy, or a multisystemic disorder combining all these features. Impairment of alpha-B crystallin dimerization may be relevant to the pathogenesis of these disorders.

## Notable Publications

Author	Pubmed ID	Journal	Application
Bo Tian	38787373	Aging (Albany NY)	IP

## Storage

**Storage:**  
Store at -20°C.  
**Storage Buffer:**  
PBS with 0.02% sodium azide and 50% glycerol pH 7.3.  
Aliquoting is unnecessary for -20°C storage

For technical support and original validation data for this product please contact:

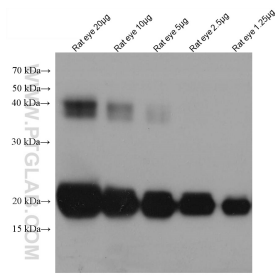
T: 4006900926

E: Proteintech-CN@ptglab.com

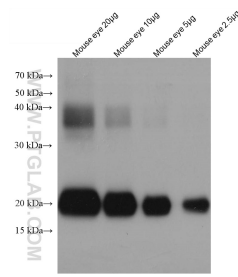
W: ptgcn.com

**This product is exclusively available under Proteintech Group brand and is not available to purchase from any other manufacturer.**

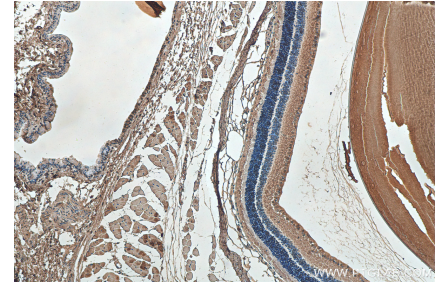
## Selected Validation Data



rat eye tissue were subjected to SDS PAGE followed by western blot with 68001-1-Ig (αB-Crystallin antibody) at dilution of 1:20000 incubated at room temperature for 1.5 hours.



mouse eye tissue were subjected to SDS PAGE followed by western blot with 68001-1-Ig (αB-Crystallin antibody) at dilution of 1:20000 incubated at room temperature for 1.5 hours.



Immunohistochemical analysis of paraffin-embedded mouse eye tissue slide using 68001-1-Ig (Alpha B Crystallin antibody) at dilution of 1:2000 (under 10x lens). Heat mediated antigen retrieval with Tris-EDTA buffer (pH 9.0).