

For Research Use Only

Alpha B Crystallin Monoclonal antibody, PBS Only



Catalog Number: 68001-1-PBS

Basic Information

| | | |
|--|--|---|
| Catalog Number: 68001-1-PBS | GenBank Accession Number: BC007008 | Purification Method: Protein A purification |
| Size: 1 mg/ml | GeneID (NCBI): 1410 | CloneNo.: 1B4C3 |
| Source: Mouse | UNIPROT ID: P02511 | |
| Isotype: IgG2b | Full Name: crystallin, alpha B | |
| Immunogen Catalog Number: AG8656 | Calculated MW: 175 aa, 20 kDa | |
| | Observed MW: 20-22 kDa | |

Applications

Tested Applications:
WB, Indirect ELISA, IHC

Species Specificity:
Human, mouse, rat

Background Information

Alpha B-crystallin, encoded by CRYAB gene, is multifunctional, serving as both a major structural protein in the lens and a small heat-shock protein in other tissues in mammals. Alpha B-crystallin may contribute to the transparency and refractive index of the lens. Single nucleotide polymorphisms (SNPs) in the promoter region of CRYAB gene have been associated with in multiple sclerosis. Mutations in the CRYAB gene cause distinct clinical phenotypes including isolated posterior polar cataract, myofibrillar myopathy, cardiomyopathy, or a multisystemic disorder combining all these features. Impairment of alpha-B crystallin dimerization may be relevant to the pathogenesis of these disorders.

Storage

Storage:
Store at -80°C.
The product is shipped with ice packs. Upon receipt, store it immediately at -80°C

Storage Buffer:
PBS Only

For technical support and original validation data for this product please contact:

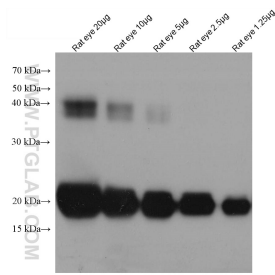
T: 4006900926

E: Proteintech-CN@ptglab.com

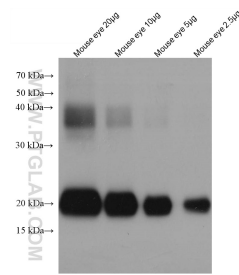
W: ptgcn.com

This product is exclusively available under Proteintech Group brand and is not available to purchase from any other manufacturer.

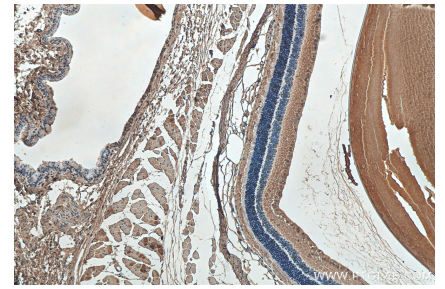
Selected Validation Data



rat eye tissue were subjected to SDS PAGE followed by western blot with 68001-1-Ig (aB-Crystallin antibody) at dilution of 1:20000 incubated at room temperature for 1.5 hours. This data was developed using the same antibody clone with 68001-1-PBS in a different storage buffer formulation.



mouse eye tissue were subjected to SDS PAGE followed by western blot with 68001-1-Ig (aB-Crystallin antibody) at dilution of 1:20000 incubated at room temperature for 1.5 hours. This data was developed using the same antibody clone with 68001-1-PBS in a different storage buffer formulation.



Immunohistochemical analysis of paraffin-embedded mouse eye tissue slide using 68001-1-Ig (Alpha B Crystallin antibody) at dilution of 1:2000 (under 10x lens). Heat mediated antigen retrieval with Tris-EDTA buffer (pH 9.0). This data was developed using the same antibody clone with 68001-1-PBS in a different storage buffer formulation.