

For Research Use Only

GMEB2 Monoclonal antibody

Catalog Number: 68010-1-Ig **Featured Product**



Basic Information

Catalog Number: 68010-1-Ig	GenBank Accession Number: BC036305	Purification Method: Protein G purification
Size: 1000 µg/ml	GeneID (NCBI): 26205	CloneNo.: 2H10H8
Source: Mouse	UNIPROT ID: Q9UKD1	Recommended Dilutions: WB 1:2000-1:10000
Isotype: IgG1	Full Name: glucocorticoid modulatory element binding protein 2	
Immunogen Catalog Number: AG31393	Calculated MW: 530 aa, 56 kDa	
	Observed MW: 68 kDa	

Applications

Tested Applications: WB, ELISA	Positive Controls:
Species Specificity: Human, mouse, rat	WB : HeLa cells, MCF-7 cells, Jurkat cells, RAW 264.7 cells, HEK-293 cells, K-562 cells, PC-12 cells, HSC-T6 cells, NIH/3T3 cells

Background Information

GMEB-2 (glucocorticoid modulatory element-binding protein 2), also known as PIF79 (Parvovirus initiation factor p79) or P79PIF, is a DNA-binding protein that plays a crucial role in modulating transcription upon activation by steroid hormones. GMEB-2 is ubiquitously expressed with preferential expression in developmentally important tissues.

Storage

Storage:
Store at -20°C. Stable for one year after shipment.
Storage Buffer:
PBS with 0.02% sodium azide and 50% glycerol pH 7.3.
Aliquoting is unnecessary for -20°C storage

For technical support and original validation data for this product please contact:

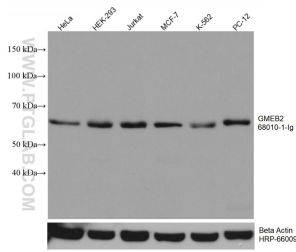
T: 4006900926

E: Proteintech-CN@ptglab.com

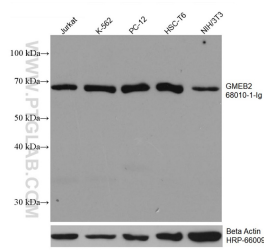
W: ptgcn.com

This product is exclusively available under Proteintech Group brand and is not available to purchase from any other manufacturer.

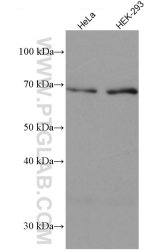
Selected Validation Data



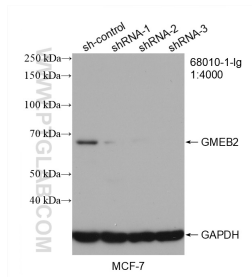
HeLa cells were subjected to SDS PAGE followed by western blot with 68010-1-Ig (GMEB2 antibody) at dilution of 1:5000 incubated at room temperature for 1.5 hours. The membrane was stripped and reblotted with HRP-conjugated Beta Actin Monoclonal antibody (HRP-66009) as loading control.



Various lysates were subjected to SDS PAGE followed by western blot with 68010-1-Ig (GMEB2 antibody) at dilution of 1:5000 incubated at room temperature for 1.5 hours. The membrane was stripped and reblotted with HRP-conjugated Beta Actin Monoclonal antibody (HRP-66009) as loading control.



Various lysates were subjected to SDS PAGE followed by western blot with 68010-1-Ig (GMEB2 antibody) at dilution of 1:5000 incubated at room temperature for 1.5 hours.



WB result of GMEB2 antibody (68010-1-Ig; 1:4000; incubated at room temperature for 1.5 hours) with sh-Control and sh-GMEB2 transfected MCF-7 cells.