

For Research Use Only

# ADPGK Monoclonal antibody, PBS Only (Detector)

Catalog Number: 68034-4-PBS



## Basic Information

Catalog Number: 68034-4-PBS	GenBank Accession Number: BC006112	Purification Method: Protein G purification
Size: 1 mg/ml	GeneID (NCBI): 83440	CloneNo.: 2A9G7
Source: Mouse	UNIPROT ID: Q9BRR6	
Isotype: IgG1	Full Name: ADP-dependent glucokinase	
Immunogen Catalog Number: AG31242	Calculated MW: 497 aa, 54 kDa	

## Applications

Tested Applications:  
Cytometric bead array, Indirect ELISA

Species Specificity:  
human

## Background Information

### Storage

Storage:  
Store at -80°C.  
The product is shipped with ice packs. Upon receipt, store it immediately at -80°C

Storage Buffer:  
PBS Only

For technical support and original validation data for this product please contact:

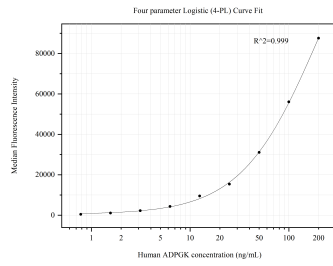
T: 4006900926

E: [Proteintech-CN@ptglab.com](mailto:Proteintech-CN@ptglab.com)

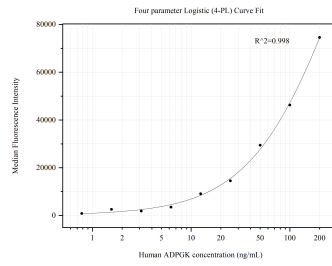
W: [ptgcn.com](http://ptgcn.com)

This product is exclusively available under Proteintech Group brand and is not available to purchase from any other manufacturer.

## Selected Validation Data



Cytometric bead array standard curve of MP50595-2, ADPGK Monoclonal Matched Antibody Pair, PBS Only. Capture antibody: 68034-2-PBS. Detection antibody: 68034-4-PBS. Standard: Ag31242. Range: 0.781-200 ng/mL.



Cytometric bead array standard curve of MP50595-3, ADPGK Monoclonal Matched Antibody Pair, PBS Only. Capture antibody: 68034-5-PBS. Detection antibody: 68034-4-PBS. Standard: Ag31242. Range: 0.781-200 ng/mL.