

For Research Use Only

# SNCB Monoclonal antibody, PBS Only



Catalog Number: 68046-1-PBS

## Basic Information

<b>Catalog Number:</b> 68046-1-PBS	<b>GenBank Accession Number:</b> BC002902	<b>Purification Method:</b> Protein G purification
<b>Size:</b> 1 mg/ml	<b>GeneID (NCBI):</b> 6620	<b>CloneNo.:</b> 2B10E10
<b>Source:</b> Mouse	<b>UNIPROT ID:</b> Q16143	
<b>Isotype:</b> IgG1	<b>Full Name:</b> synuclein, beta	
<b>Immunogen Catalog Number:</b> AG0772	<b>Calculated MW:</b> 14 kDa	
	<b>Observed MW:</b> 18 kDa	

## Applications

**Tested Applications:**  
WB, Indirect ELISA, IF

**Species Specificity:**  
Human, mouse, rat, pig, rabbit, chicken

## Background Information

### Storage

**Storage:**  
Store at -80°C.

**Storage Buffer:**  
PBS Only

For technical support and original validation data for this product please contact:

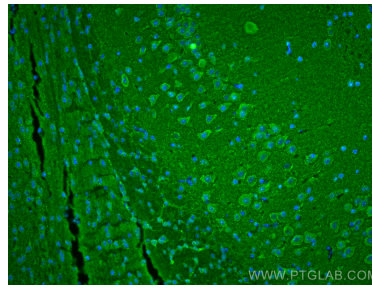
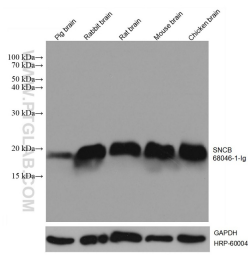
T: 4006900926

E: [Proteintech-CN@ptglab.com](mailto:Proteintech-CN@ptglab.com)

W: [ptgcn.com](http://ptgcn.com)

This product is exclusively available under Proteintech Group brand and is not available to purchase from any other manufacturer.

## Selected Validation Data



Brain tissues were subjected to SDS PAGE followed by western blot with 68046-1-Ig (SNCB antibody) at dilution of 1:10000 incubated at room temperature for 1.5 hours. The membrane was stripped and reblotted with HRP-conjugated GAPDH Monoclonal antibody (HRP-60004) as loading control. This data was developed using the same antibody clone with 68046-1-PBS in a different storage buffer formulation.

Immunofluorescent analysis of (4% PFA) fixed mouse brain tissue using SNCB antibody (68046-1-Ig, Clone: 2B10E10) at dilution of 1:400 and CoraLite®488-Conjugated AffiniPure Goat Anti-Mouse IgG(H+L). This data was developed using the same antibody clone with 68046-1-PBS in a different storage buffer formulation.