

For Research Use Only

HTRA1 Monoclonal antibody, PBS Only



Catalog Number: 68053-1-PBS

Basic Information

Catalog Number: 68053-1-PBS	GenBank Accession Number: NM_002775	Purification Method: Protein A purification
Size: 1 mg/ml	GeneID (NCBI): 5654	CloneNo.: 1B11G12
Source: Mouse	UNIPROT ID: Q92743	
Isotype: IgG2a	Full Name: HtrA serine peptidase 1	
Immunogen Catalog Number: AG31204	Calculated MW: 51 kDa	
	Observed MW: 51 kDa	

Applications

Tested Applications:
WB, Indirect ELISA

Species Specificity:
Human, mouse, rat, pig, rabbit

Background Information

HTRA1, also named as HTRA, PRSS11 and L56, belongs to the peptidase S1B family. It is a protease that regulates the availability of insulin-like growth factors (IGFs) by cleaving IGF-binding proteins. HTRA1 represses signaling by TGF-beta family members. Variations in the promoter region of HTRA1 are the cause of susceptibility to age-related macular degeneration type 7 (ARMD7). Defects in HTRA1 are the cause of cerebral autosomal recessive arteriopathy with subcortical infarcts and leukoencephalopathy (CARASIL). The 50 kDa HTRA1 was found at varying levels in the majority samples tested, whereas the 42 kDa form of HTRA1 was identified in degenerated intervertebral disc protein samples (PMID:22556410). The short truncated monomer 37 kDa and dimer 74 kDa are proved (PMID:25329061). The antibody is specific to HTRA1.

Storage

Storage:
Store at -80°C.
The product is shipped with ice packs. Upon receipt, store it immediately at -80°C

Storage Buffer:
PBS Only

For technical support and original validation data for this product please contact:

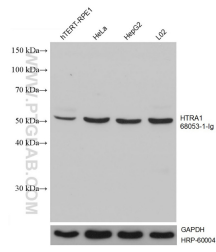
T: 4006900926

E: Proteintech-CN@ptglab.com

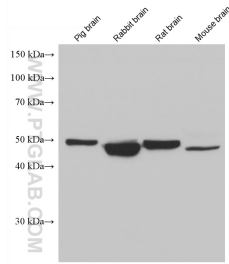
W: ptgcn.com

This product is exclusively available under Proteintech Group brand and is not available to purchase from any other manufacturer.

Selected Validation Data



Various lysates were subjected to SDS PAGE followed by western blot with 68053-1-Ig (HTRA1 antibody) at dilution of 1:3000 incubated at room temperature for 1.5 hours. The membrane was stripped and reblotted with HRP-conjugated GAPDH Monoclonal antibody (HRP-60004) as loading control. This data was developed using the same antibody clone with 68053-1-PBS in a different storage buffer formulation.



Various lysates were subjected to SDS PAGE followed by western blot with 68053-1-Ig (HTRA1 antibody) at dilution of 1:3000 incubated at room temperature for 1.5 hours. This data was developed using the same antibody clone with 68053-1-PBS in a different storage buffer formulation.