

For Research Use Only

NSF Monoclonal antibody, PBS Only

Catalog Number: 68061-1-PBS

Featured Product



Basic Information

Catalog Number: 68061-1-PBS	GenBank Accession Number: BC030613	Purification Method: Protein A purification
Size: 1 mg/ml	GeneID (NCBI): 4905	CloneNo.: 2B6H6
Source: Mouse	UNIPROT ID: P46459	
Isotype: IgG2a	Full Name: N-ethylmaleimide-sensitive factor	
Immunogen Catalog Number: AG15422	Calculated MW: 744 aa, 83 kDa	
	Observed MW: 70-83 kDa	

Applications

Tested Applications:
WB, Indirect ELISA, IF

Species Specificity:
Human, Pig, Rabbit, Rat, Mouse, Chicken

Background Information

Storage

Storage:
Store at -80°C.
The product is shipped with ice packs. Upon receipt, store it immediately at -80°C

Storage Buffer:
PBS Only

For technical support and original validation data for this product please contact:

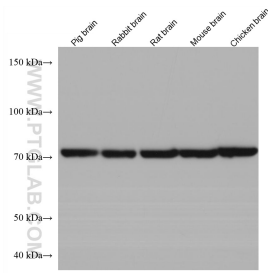
T: 4006900926

E: Proteintech-CN@ptglab.com

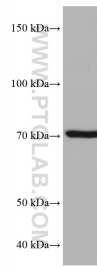
W: ptgcn.com

This product is exclusively available under Proteintech Group brand and is not available to purchase from any other manufacturer.

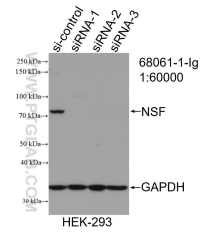
Selected Validation Data



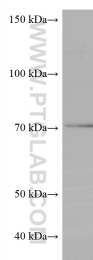
Various lysates were subjected to SDS PAGE followed by western blot with 68061-1-Ig (NSF antibody) at dilution of 1:10000 incubated at room temperature for 1.5 hours. This data was developed using the same antibody clone with 68061-1-PBS in a different storage buffer formulation.



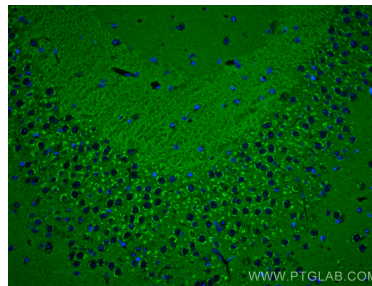
PC-12 cells were subjected to SDS PAGE followed by western blot with 68061-1-Ig (NSF antibody) at dilution of 1:10000 incubated at room temperature for 1.5 hours. This data was developed using the same antibody clone with 68061-1-PBS in a different storage buffer formulation.



WB result of NSF antibody (68061-1-Ig; 1:60000; incubated at room temperature for 1.5 hours) with sh-Control and sh-NSF transfected HEK-293 cells. This data was developed using the same antibody clone with 68061-1-PBS in a different storage buffer formulation.



SH-SY5Y cells were subjected to SDS PAGE followed by western blot with 68061-1-Ig (NSF antibody) at dilution of 1:10000 incubated at room temperature for 1.5 hours. This data was developed using the same antibody clone with 68061-1-PBS in a different storage buffer formulation.



Immunofluorescent analysis of (4% PFA) fixed mouse brain tissue using NSF antibody (68061-1-Ig, Clone: 2B6H6) at dilution of 1:600 and CoraLite®488-Conjugated AffiniPure Goat Anti-Mouse IgG(H+L). This data was developed using the same antibody clone with 68061-1-PBS in a different storage buffer formulation.