

For Research Use Only

ARF1 Monoclonal antibody, PBS Only

Catalog Number: 68069-1-PBS



Basic Information

Catalog Number: 68069-1-PBS	GenBank Accession Number: BC009247	Purification Method: Protein G purification
Size: 1mg/ml	GeneID (NCBI): 375	CloneNo.: 1C10E3
Source: Mouse	UNIPROT ID: P84077	
Isotype: IgG1	Full Name: ADP-ribosylation factor 1	
Immunogen Catalog Number: AG28021	Calculated MW: 21 kDa	
	Observed MW: 18-21 kDa	

Applications

Tested Applications:
Indirect ELISA, IF/ICC, WB

Species Specificity:
rabbit, pig, rat, mouse, human

Background Information

ADP-ribosylation factors (ARFs) are members of the ARF family of GTP-binding proteins of the Ras superfamily. ARFs bind and regulate GTP/GDP cycle by alternating between the active GTP-bound and inactive GDP-bound conformations. ARF family proteins are essential and ubiquitous in eukaryotes. Six highly conserved members of the family have been identified in mammalian cells. They function in vesicular traffic and actin remodelling and other bioprocesses in cells. The ARF1 protein is localized to the Golgi apparatus and has a central role in intra-Golgi transport. It mainly functions in coat recruitment.(PMID: 7759471, PMID: 16042562).

Storage

Storage:
Store at -80°C.
The product is shipped with ice packs. Upon receipt, store it immediately at -80°C

Storage Buffer:
PBS Only

For technical support and original validation data for this product please contact:

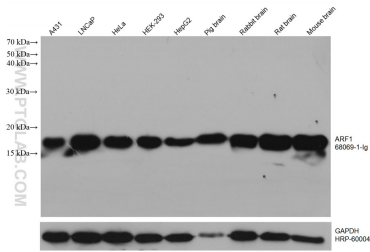
T: 4006900926

E: Proteintech-CN@ptglab.com

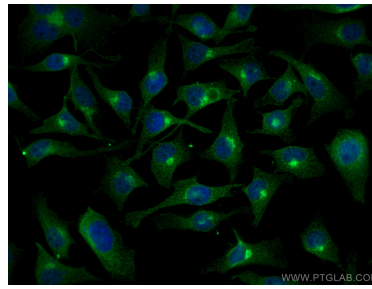
W: ptgcn.com

This product is exclusively available under Proteintech Group brand and is not available to purchase from any other manufacturer.

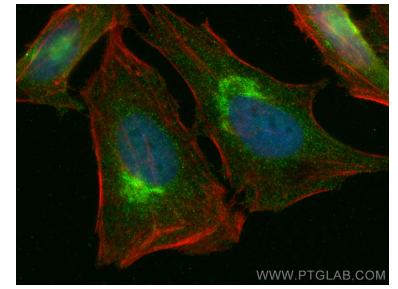
Selected Validation Data



Various lysates were subjected to SDS PAGE followed by western blot with 68069-1-Ig (ARF1 antibody) at dilution of 1:10000 incubated at room temperature for 1.5 hours. The membrane was stripped and reblotted with HRP-conjugated GAPDH Monoclonal antibody (HRP-60004) as loading control. This data was developed using the same antibody clone with 68069-1-PBS in a different storage buffer formulation.



Immunofluorescent analysis of (4% PFA) fixed HeLa cells using ARF1 antibody (68069-1-Ig, Clone: 1C10E3) at dilution of 1:400 and CoraLite@488-Conjugated AffiniPure Goat Anti-Mouse IgG(H+L). This data was developed using the same antibody clone with 68069-1-PBS in a different storage buffer formulation.



Immunofluorescent analysis of (4% PFA) fixed HeLa cells using ARF1 antibody (68069-1-Ig, Clone: 1C10E3) at dilution of 1:800 and CoraLite@488-Conjugated AffiniPure Goat Anti-Mouse IgG(H+L), CL594-phalloidin (red). This data was developed using the same antibody clone with 68069-1-PBS in a different storage buffer formulation.