

For Research Use Only

# DPEP1 Monoclonal antibody

Catalog Number: 68081-1-Ig



## Basic Information

<b>Catalog Number:</b> 68081-1-Ig	<b>GenBank Accession Number:</b> BC017023	<b>Purification Method:</b> Protein A purification
<b>Size:</b> 1000 µg/ml	<b>GeneID (NCBI):</b> 1800	<b>CloneNo.:</b> 2B4F4
<b>Source:</b> Mouse	<b>UNIPROT ID:</b> P16444	<b>Recommended Dilutions:</b> WB 1:5000-1:50000 IHC 1:500-1:2000 IF 1:200-1:800
<b>Isotype:</b> IgG2a	<b>Full Name:</b> dipeptidase 1 (renal)	
<b>Immunogen Catalog Number:</b> AG14591	<b>Calculated MW:</b> 411 aa, 46 kDa	
	<b>Observed MW:</b> 46 kDa	

## Applications

### Tested Applications:

IF-P, IHC, WB, ELISA

### Species Specificity:

Human, Mouse, Rat, Pig, rabbit

**Note-IHC: suggested antigen retrieval with TE buffer pH 9.0; (\*) Alternatively, antigen retrieval may be performed with citrate buffer pH 6.0**

### Positive Controls:

**WB:** human testis tissue, rabbit kidney tissue, pig pancreas tissue, rat pancreas tissue, HepG2 cells

**IHC:** human kidney tissue,

**IF:** mouse kidney tissue,

## Background Information

### Storage

#### Storage:

Store at -20°C. Stable for one year after shipment.

#### Storage Buffer:

PBS with 0.02% sodium azide and 50% glycerol pH 7.3.

Aliquoting is unnecessary for -20°C storage

For technical support and original validation data for this product please contact:

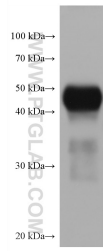
T: 4006900926

E: [Proteintech-CN@ptglab.com](mailto:Proteintech-CN@ptglab.com)

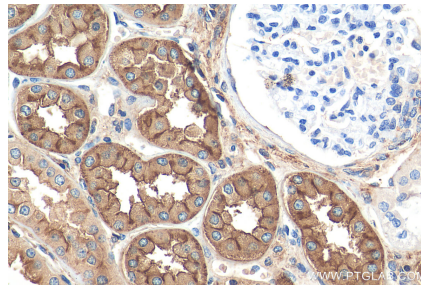
W: [ptgcn.com](http://ptgcn.com)

**This product is exclusively available under Proteintech Group brand and is not available to purchase from any other manufacturer.**

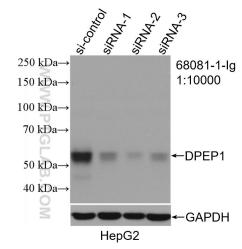
## Selected Validation Data



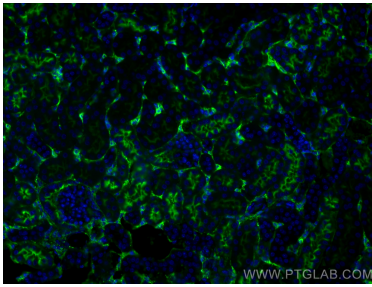
human testis tissue were subjected to SDS PAGE followed by western blot with 68081-1-Ig (DPEP1 antibody) at dilution of 1:10000 incubated at room temperature for 1.5 hours.



Immunohistochemical analysis of paraffin-embedded human kidney tissue slide using 68081-1-Ig (DPEP1 antibody) at dilution of 1:1000 (under 40x lens). Heat mediated antigen retrieval with Tris-EDTA buffer (pH 9.0).



WB result of DPEP1 antibody (68081-1-Ig; 1:10000; incubated at room temperature for 1.5 hours) with sh-Control and sh-DPEP1 transfected HepG2 cells.



Immunofluorescent analysis of (4% PFA) fixed mouse kidney tissue using DPEP1 antibody (68081-1-Ig, Clone: 2B4F4) at dilution of 1:400 and CoraLite®488-Conjugated AffiniPure Goat Anti-Mouse IgG(H+L).