

For Research Use Only

# FKBP10/FKBP65 Monoclonal antibody

Catalog Number: 68085-1-Ig **Featured Product**



## Basic Information

**Catalog Number:**

68085-1-Ig

**Size:**

1000 ug/ml

**Source:**

Mouse

**Isotype:**

IgG1

**Immunogen Catalog Number:**

AG31628

**GenBank Accession Number:**

BC016467

**GeneID (NCBI):**

60681

**UNIPROT ID:**

Q96AY3

**Full Name:**

FK506 binding protein 10, 65 kDa

**Calculated MW:**

582 aa, 64 kDa

**Observed MW:**

64-70 kDa

**Purification Method:**

Protein G purification

**CloneNo.:**

1B3D9

**Recommended Dilutions:**

WB 1:2000-1:10000

## Applications

**Tested Applications:**

WB, ELISA

**Species Specificity:**

human

**Positive Controls:**

WB : LNCaP cells, HeLa cells, MCF-7 cells, HEK-293 cells

## Background Information

FKBP10, also known as FKBP65, is a 65 kDa FK506 binding protein that is a member of the FKBP-type peptidyl-prolyl cis/trans isomerase family. This protein localizes to the endoplasmic reticulum and acts as a molecular chaperone and binding partner of type I collagen. FKBP65 is expressed in developing tissues and re-expressed in adult tissues following injury. As documented, FKBP10 has been detected to play important roles in the initiation and progression of cancers.

## Storage

**Storage:**

Store at -20°C. Stable for one year after shipment.

**Storage Buffer:**

PBS with 0.02% sodium azide and 50% glycerol pH 7.3.

Aliquoting is unnecessary for -20°C storage

For technical support and original validation data for this product please contact:

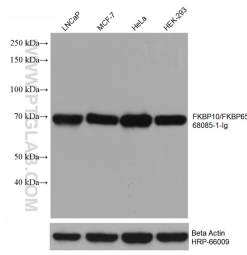
T: 4006900926

E: [Proteintech-CN@ptglab.com](mailto:Proteintech-CN@ptglab.com)

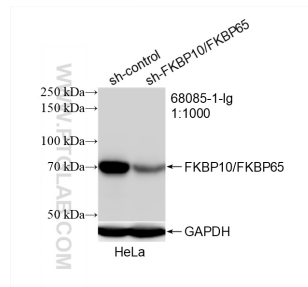
W: [ptgcn.com](http://ptgcn.com)

**This product is exclusively available under Proteintech Group brand and is not available to purchase from any other manufacturer.**

## Selected Validation Data



Various lysates were subjected to SDS PAGE followed by western blot with 68085-1-Ig (FKBP10 antibody) at dilution of 1:5000 incubated at room temperature for 1.5 hours. The membrane was stripped and reblotted with HRP-conjugated Beta Actin Monoclonal antibody (HRP-66009) as loading control.



WB result of FKBP10/FKBP65 antibody (68085-1-Ig; 1:1000; incubated at room temperature for 1.5 hours) with sh-Control and sh-FKBP10/FKBP65 transfected HeLa cells.