

For Research Use Only

SLC25A16 Monoclonal antibody, PBS Only



Catalog Number: 68107-1-PBS

Basic Information

Catalog Number:

68107-1-PBS

Size:

1 mg/ml

Source:

Mouse

Isotype:

IgG1

Immunogen Catalog Number:

AG4891

GenBank Accession Number:

BC030266

GeneID (NCBI):

8034

UNIPROT ID:

P16260

Full Name:

solute carrier family 25
(mitochondrial carrier; Graves disease
autoantigen), member 16

Calculated MW:

36 kDa

Observed MW:

33 kDa

Purification Method:

Protein G purification

CloneNo.:

3F10C8

Applications

Tested Applications:

WB, Indirect ELISA

Species Specificity:

Human

Background Information

GDA, also named as SLC25A16, GDC, ML7, hML7, belongs to the mitochondrial carrier family. GDA encodes a protein that contains three tandemly repeated mitochondrial carrier protein domains. The encoded protein is localized in the mitochondrion inner membrane and facilitates the rapid transport and exchange of molecules between the cytosol and the mitochondrial matrix space. This gene has been associated with Graves' disease (PMID:11158296, 1457817).

Storage

Storage:

Store at -80°C.

The product is shipped with ice packs. Upon receipt, store it immediately at -80°C

Storage Buffer:

PBS Only

For technical support and original validation data for this product please contact:

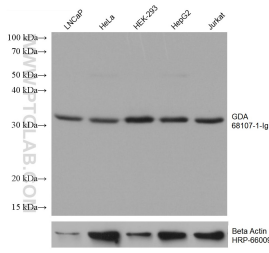
T: 4006900926

E: Proteintech-CN@ptglab.com

W: ptgcn.com

This product is exclusively available under Proteintech Group brand and is not available to purchase from any other manufacturer.

Selected Validation Data



Various lysates were subjected to SDS PAGE followed by western blot with 68107-1-Ig (GDA antibody) at dilution of 1:10000 incubated at room temperature for 1.5 hours. The membrane was stripped and reblotted with HRP-conjugated Beta Actin Monoclonal antibody (HRP-66009) as loading control. This data was developed using the same antibody clone with 68107-1-PBS in a different storage buffer formulation.