

For Research Use Only

SMG6 Monoclonal antibody

Catalog Number: 68109-1-Ig



Basic Information

Catalog Number:

68109-1-Ig

Size:

1000 µg/ml

Source:

Mouse

Isotype:

IgG2a

Immunogen Catalog Number:

AG30182

GenBank Accession Number:

NM_017575

GeneID (NCBI):

23293

UNIPROT ID:

Q86US8

Full Name:

Smg-6 homolog, nonsense mediated mRNA decay factor (C. elegans)

Calculated MW:

160 kDa

Observed MW:

160 kDa

Purification Method:

Protein A purification

CloneNo.:

1D2G2

Recommended Dilutions:

WB 1:1000-1:6000

Applications

Tested Applications:

WB, ELISA

Species Specificity:

Human, mouse

Positive Controls:

WB: LNCaP cells, RAW 264.7 cells, MCF-7 cells, HeLa cells, HEK-293 cells

Background Information

SMG6, also known as C17orf31, EST1A, and hEST1A, is a component of the telomerase ribonucleoprotein (RNP) complex that is essential for the replication of chromosome termini (PMID: 19179534). It promotes in vitro the ability of TERT to elongate telomeres (PMID: 12676087, 12699629). SMG6 also plays a role in the nonsense-mediated mRNA decay (NMD) pathway, providing the endonuclease activity near the premature translation termination codon that is needed to initiate NMD (PMID: 19060897, 20930030). Alternate splicing results in multiple transcript variants (PMID: 12699629, 14636577).

Storage

Storage:

Store at -20°C. Stable for one year after shipment.

Storage Buffer:

PBS with 0.02% sodium azide and 50% glycerol pH 7.3.

Aliquoting is unnecessary for -20°C storage

For technical support and original validation data for this product please contact:

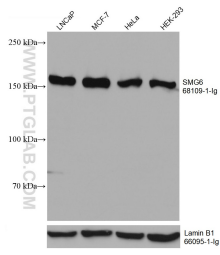
T: 4006900926

E: Proteintech-CN@ptglab.com

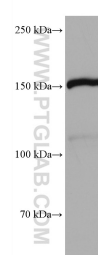
W: ptgcn.com

This product is exclusively available under Proteintech Group brand and is not available to purchase from any other manufacturer.

Selected Validation Data



Various lysates were subjected to SDS PAGE followed by western blot with 68109-1-Ig (SMG6 antibody) at dilution of 1:3000 incubated at room temperature for 1.5 hours. The membrane was stripped and reblotted with Lamin B1 Monoclonal antibody (66095-1-Ig) as loading control.



RAW 264.7 cells were subjected to SDS PAGE followed by western blot with 68109-1-Ig (SMG6 antibody) at dilution of 1:3000 incubated at room temperature for 1.5 hours.