

For Research Use Only

# RPL12 Monoclonal antibody, PBS Only



Catalog Number: 68110-1-PBS

## Basic Information

|                                     |                                       |  |
|-------------------------------------|---------------------------------------|--|
| Catalog Number:<br>68110-1-PBS      | GenBank Accession Number:<br>BC050644 | Purification Method:<br>Protein G purification |
| Size:<br>1 mg/ml                    | GeneID (NCBI):<br>6136                | CloneNo.:<br>2C9B3                             |
| Source:<br>Mouse                    | UNIPROT ID:<br>P30050                 |  |
| Isotype:<br>IgG1                    | Full Name:<br>ribosomal protein L12   |  |
| Immunogen Catalog Number:<br>AG6580 | Calculated MW:<br>18 kDa              |  |
|                                     | Observed MW:<br>21 kDa                |  |

## Applications

Tested Applications:  
WB, Indirect ELISA

Species Specificity:  
Human, mouse, rat

## Background Information

### Storage

Storage:  
Store at -80°C.  
The product is shipped with ice packs. Upon receipt, store it immediately at -80°C

Storage Buffer:  
PBS Only

For technical support and original validation data for this product please contact:

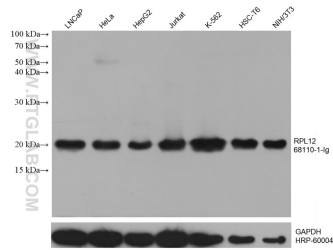
T: 4006900926

E: [Proteintech-CN@ptglab.com](mailto:Proteintech-CN@ptglab.com)

W: [ptgcn.com](http://ptgcn.com)

This product is exclusively available under Proteintech Group brand and is not available to purchase from any other manufacturer.

## Selected Validation Data



Various lysates were subjected to SDS PAGE followed by western blot with 68110-1-ig (RPL12 antibody) at dilution of 1:100000 incubated at room temperature for 1.5 hours. The membrane was stripped and reblotted with HRP-conjugated GAPDH Monoclonal antibody (HRP-60004) as loading control. This data was developed using the same antibody clone with 68110-1-PBS in a different storage buffer formulation.