

For Research Use Only

DCT Monoclonal antibody, PBS Only

Catalog Number: 68114-1-PBS



Basic Information

Catalog Number:

68114-1-PBS

Size:

1 mg/ml

Source:

Mouse

Isotype:

IgG1

Immunogen Catalog Number:

AG26165

GenBank Accession Number:

BC028311

GeneID (NCBI):

1638

UNIPROT ID:

P40126

Full Name:

dopachrome tautomerase
(dopachrome delta-isomerase,
tyrosine-related protein 2)

Calculated MW:

519 aa, 59 kDa

Observed MW:

55-63 kDa

Purification Method:

Protein A purification

CloneNo.:

1B3D4

Applications

Tested Applications:

WB, Indirect ELISA, IF

Species Specificity:

Human, Mouse, Pig

Background Information

DCT(L-dopachrome Delta-isomerase) is also named as TYRP2, TRP2 and belongs to the tyrosinase family. human TYRP2 protein has 83% identity and 90% similarity to the mouse sequence and has all the structural characteristics of the tyrosinase protein family, including a signal peptide, 15 conserved cysteine residues, 2 copper-binding domains, and a C-terminal membrane-spanning region (PMID:8206391).

Storage

Storage:

Store at -80°C.

Storage Buffer:

PBS Only

For technical support and original validation data for this product please contact:

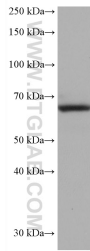
T: 4006900926

E: Proteintech-CN@ptglab.com

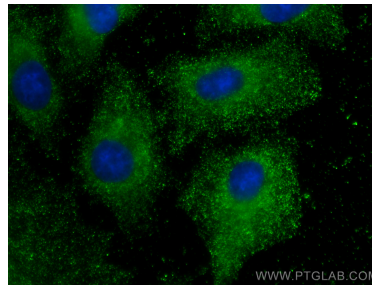
W: ptgcn.com

This product is exclusively available under Proteintech Group brand and is not available to purchase from any other manufacturer.

Selected Validation Data



A375 cells were subjected to SDS PAGE followed by western blot with 68114-1-Ig (DCT antibody) at dilution of 1:2000 incubated at room temperature for 1.5 hours. This data was developed using the same antibody clone with 68114-1-PBS in a different storage buffer formulation.



Immunofluorescent analysis of (-20°C Methanol) fixed A549 cells using DCT antibody (68114-1-Ig, Clone: 1B3D4) at dilution of 1:400 and CoraLite®488-Conjugated AffiniPure Goat Anti-Mouse IgG(H+L). This data was developed using the same antibody clone with 68114-1-PBS in a different storage buffer formulation.