

For Research Use Only

PLA2G4A Monoclonal antibody, PBS Only



Catalog Number: 68133-1-PBS

Basic Information

Catalog Number:

68133-1-PBS

Size:

1mg/ml

Source:

Mouse

Isotype:

IgG1

Immunogen Catalog Number:

AG32674

GenBank Accession Number:

BC114340

GeneID (NCBI):

5321

UNIPROT ID:

P47712

Full Name:

phospholipase A2, group IVA
(cytosolic, calcium-dependent)

Calculated MW:

749 aa, 85 kDa

Observed MW:

85-100 kDa

Purification Method:

Protein A purification

CloneNo.:

2D10H8

Applications

Tested Applications:

WB, IF, IHC, ELISA

Species Specificity:

Human

Background Information

Storage

Storage:

Store at -80°C.

The product is shipped with ice packs. Upon receipt, store it immediately at -80°C

Storage Buffer:

PBS Only

For technical support and original validation data for this product please contact:

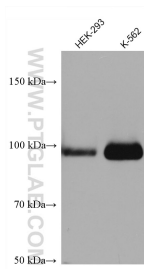
T: 4006900926

E: Proteintech-CN@ptglab.com

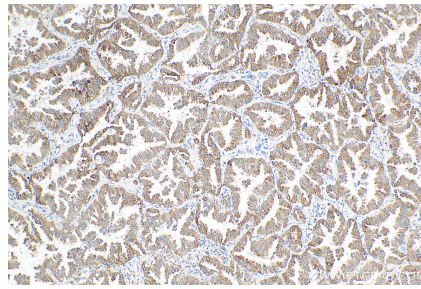
W: ptgcn.com

This product is exclusively available under Proteintech Group brand and is not available to purchase from any other manufacturer.

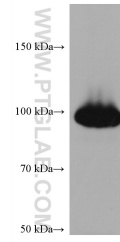
Selected Validation Data



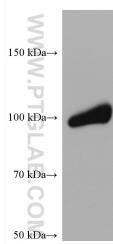
Various lysates were subjected to SDS PAGE followed by western blot with 68133-1-Ig (PLA2G4A antibody) at dilution of 1:10000 incubated at room temperature for 1.5 hours. This data was developed using the same antibody clone with 68133-1-PBS in a different storage buffer formulation.



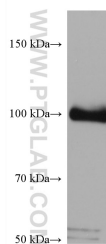
Immunohistochemical analysis of paraffin-embedded human lung cancer tissue slide using 68133-1-Ig (PLA2G4A antibody) at dilution of 1:1000 (under 10x lens). Heat mediated antigen retrieval with Tris-EDTA buffer (pH 9.0). This data was developed using the same antibody clone with 68133-1-PBS in a different storage buffer formulation.



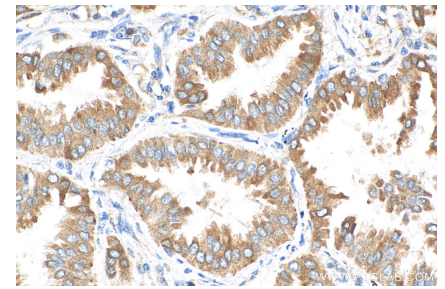
HeLa cells were subjected to SDS PAGE followed by western blot with 68133-1-Ig (PLA2G4A antibody) at dilution of 1:10000 incubated at room temperature for 1.5 hours. This data was developed using the same antibody clone with 68133-1-PBS in a different storage buffer formulation.



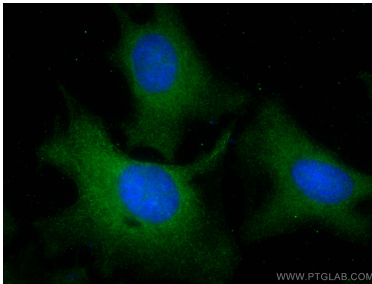
NIH/3T3 cells were subjected to SDS PAGE followed by western blot with 68133-1-Ig (PLA2G4A antibody) at dilution of 1:10000 incubated at room temperature for 1.5 hours. This data was developed using the same antibody clone with 68133-1-PBS in a different storage buffer formulation.



A549 cells were subjected to SDS PAGE followed by western blot with 68133-1-Ig (PLA2G4A antibody) at dilution of 1:10000 incubated at room temperature for 1.5 hours. This data was developed using the same antibody clone with 68133-1-PBS in a different storage buffer formulation.



Immunohistochemical analysis of paraffin-embedded human lung cancer tissue slide using 68133-1-Ig (PLA2G4A antibody) at dilution of 1:1000 (under 40x lens). Heat mediated antigen retrieval with Tris-EDTA buffer (pH 9.0). This data was developed using the same antibody clone with 68133-1-PBS in a different storage buffer formulation.



Immunofluorescent analysis of (-20°C Methanol) fixed HeLa cells using PLA2G4A antibody (68133-1-Ig, Clone: 2D10H8) at dilution of 1:100 and CoraLite®488-Conjugated AffiniPure Goat Anti-Mouse IgG(H+L). This data was developed using the same antibody clone with 68133-1-PBS in a different storage buffer formulation.